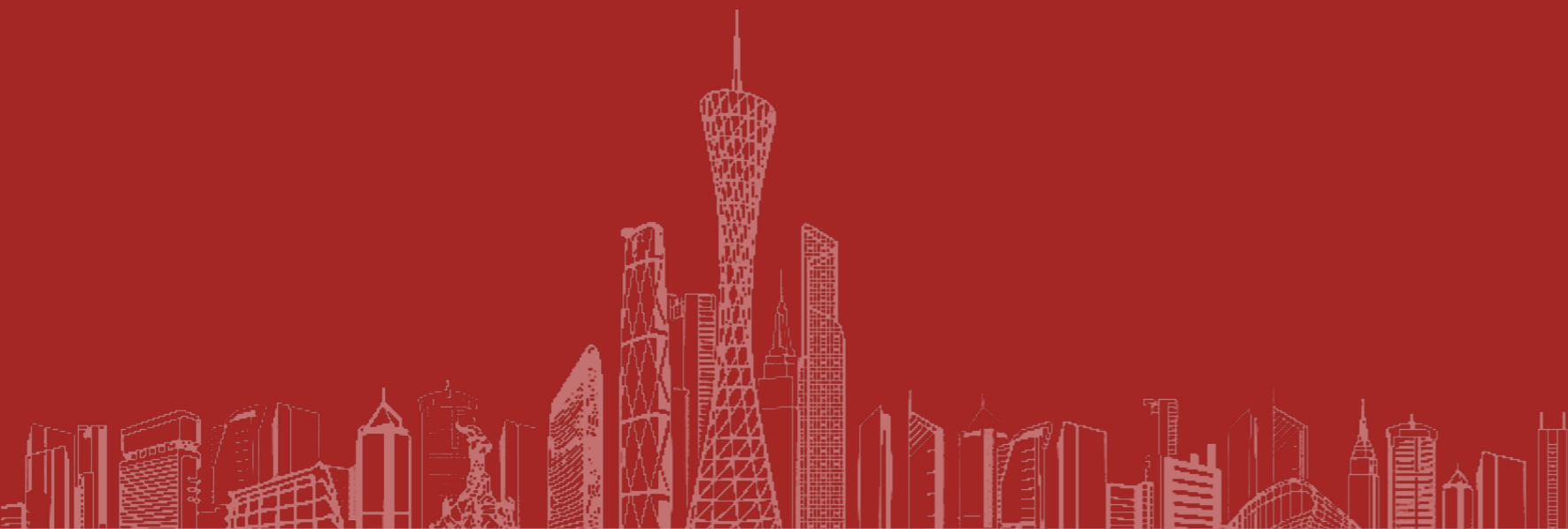


AIGE IBB

埃格测控

www.china**IBB**.com



宁波埃格测控技术有限公司

Ningbo AIGE measurement and control technology Co., LTD

电话 (TEL) : 400-992-2081

web: www.chinaIBB.com

E-MAIL: will.ma@chinaibb.com

地址: 浙江省宁波市高新区扬帆路1678号工业互联网·维科产业园13幢3楼1号 (西面)

ADD: No. 1, 3rd Floor, Building 13 (West Side), Industrial Internet·Weike Industrial Park, No. 1678 Yangfan Road, High-tech Zone, Ningbo City, Zhejiang Province



宁波埃格测控技术有限公司

测控系统解决方案供应商



ENTERPRISE QUALIFICATION / 企业资质

我们建立了完善的产品质量保障系统，在各个业务流程、不同节点均设置了严苛的质检措施，覆盖从原材料的采购、加工、装配，到产品的最终调试的各个环节。在产品交付运行后，我们更是为客户提供了完善的售后服务，确保客户能快速、及时得到支持和响应。目前公司产品已审核通过ISO9001质量管理体系认证、CE认证、ROSH认证。

We have established a perfect product quality assurance system, and set strict quality inspection measures in each business process and different nodes, covering all aspects from raw material procurement, processing, assembly, to the final commissioning of products. After the product delivery and operation, we provide customers with perfect after-sales service to ensure that customers can quickly and timely support and response.

Presently, the company's products have obtained ISO 9001 Quality Management System certification, CE marking, and RoHS compliance certification.

COMPANY PROFILE / 公司介绍

宁波埃格测控技术有限公司是一家专业从事磁性位移角度测量和工业控制系统设计研发、生产制造、销售于一体的高新技术企业，每年大力支持技术研发投入，与各大企业有深入的技术合作。

主要产品：磁传感器、直线电机、磁尺、磁栅数显表、光栅传感器、球栅传感器、气压传感器、容栅传感器，倾角传感器、各类信号转换模块等。

产品应用领域：新能源、锂电、医疗设备、光伏、半导体、太阳能、3C电子、3D打印、CNC、精密机床等高端设备。

测量范围涵盖：位移、角度、速度及重量等。并能精准快速的给客户id提供自动化测量控制解决方案，公司经过多年的技术沉淀，产品稳定性达到了进出口品质。

Ningbo AIGE Measurement and Control Technology Co., Ltd. is a professional engaged in magnetic displacement Angle measurement and industrial control system design and development, manufacturing, sales in one of the high-tech enterprises, every year to support technology research and development investment, with the major enterprises have in-depth technical cooperation.

Main products: magnetic sensor, linear motor, magnetic ruler, magnetic gate digital display meter, grating sensor, ball gate sensor, pressure sensor, capacitive gate sensor, inclination sensor, all kinds of signal conversion module.

Product application: new energy, lithium, medical equipment, photovoltaic, semiconductor, solar energy, 3C electronics, 3D printing, CNC, precision machine tools and other high-end equipment.

Measuring range covers: displacement, Angle, speed and weight. And can accurately and quickly provide customers with automated measurement and control solutions, the company after years of technical precipitation, product stability has reached import and export quality



公司坚持以客户为中心，以不断提高客户的体验为目标，对客户各项需求做出快速反应。公司不仅仅要满足客户需求，还要创造客户需求，引领客户需求，超越客户需求，为客户创造价值，最终成就客户。

The company adheres to the customer as the center, to continuously improve the customer experience as the goal, to respond quickly to the needs of customers. The company should not only meet customer needs, but also create customer needs, lead customer needs, exceed customer needs, create value for customers, and ultimately achieve customers.

我们的企业文化为：诚实、凝聚、创新、共赢。

Our corporate culture is: honesty, cohesion, innovation, win-win.

公司以“中国制造、工匠精神”为立企之本，以质量为企业的生命，公司的愿景是将“埃格”打造成百年品牌！

The company takes "Made in China, craftsman spirit" as the foundation of the enterprise, and takes quality as the life of the enterprise. The company's vision is to build "Egger" into a century-old brand!

AIGE IBB

目录

CATALOGUE

01/44 位移角度测量 (DISPLACEMENT ANGLE MEASUREMENT)

1.1磁栅 (MAGNETIC GRID)

1.2光栅 (GRATING)

1.3其它 (OTHER)

45/52 直线电机 (LINEAR MOTOR)

53/66 称重测量 (WEIGHING MEASUREMENT)

67/68 倾角测量 (DIP MEASUREMENT)

69/74 气压测量 (BAROMETRIC MEASUREMENT)

MAGNETIC SENSOR 磁栅传感器

◎ MSR系列 (MSR SERIES)



■ 非接触测量，零磨损
Non-contact measurement, zero wear

■ 外形设计小巧，安装方便
Compact design, easy to install

■ 抗震、防油、防尘、防水、耐高温
Seismic, oil, dust, water, high temperature resistance

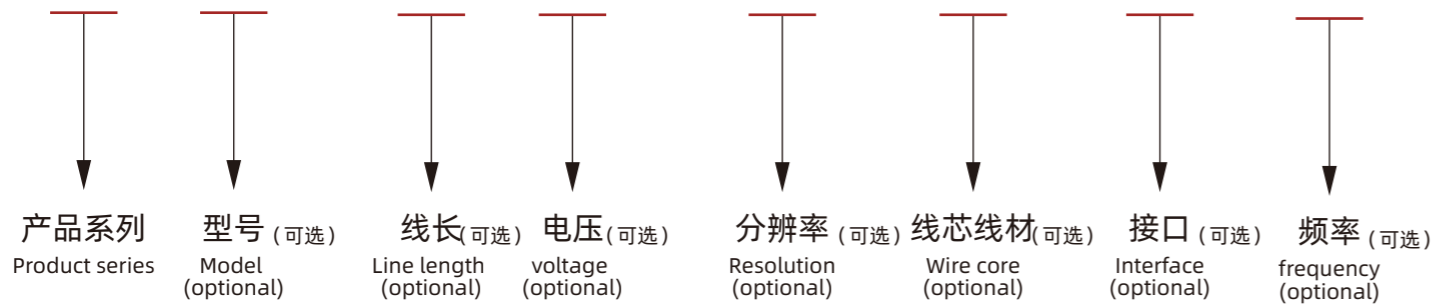
■ 直线长度可达百米以上
The straight line length can reach more than 100 meters

■ 准确的测量出长度、角度
Accurately measure the length and Angle

■ 刮尘设计
Dust scraping design

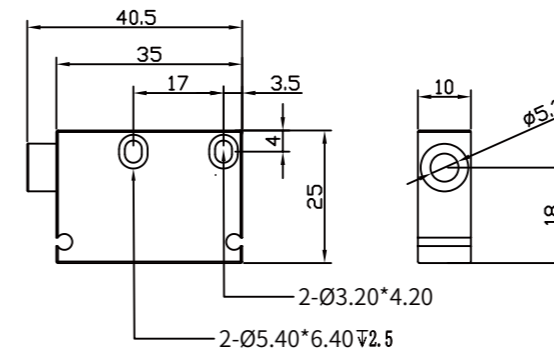
◎ 订货型号 (ORDER TYPE)

MSR 5000 - L300 N5 - 0.005 - 8B - AF0X1 - 1B

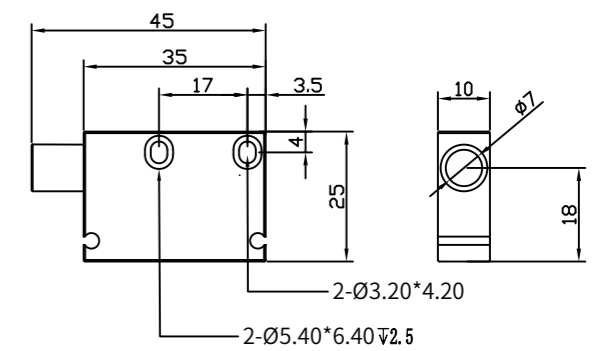


◎ 技术参数 (TECHNICAL PARAMETER)

型号参数 (Type parameter)	MSR2000	MSR5000
配套磁尺 (Matching magnetic ruler)	MS20	MS50
磁极距 (Magnetic pole distance)	2mm	5mm
工作电压 (Operating voltage)	5V / 5V-30V	
分辨率 (Resolution)	Max.1μm	Max.2.5μm
重复精度 (repeatability)	Max.±1μm/m	Max.±2.5μm/m
输出信号 (Output signal)	单端或差分 (Single-ended or differential)	
安装间隙 (Installation clearance)	Max.0.8mm	Max.3mm
移动速度 (Moving speed)	Max.4m/s	Max.20m/s
工作温度 (Operating temperature)	-20°C~ +80°C	
保护等级 (Protection class)	IP67	
输出形式 (Output form)	RS422/TTL	
外观材质 (Appearance material)	锌合金 (Zinc alloy)	
可定制参数 (Customizable parameter)	分辨率、输出频率、计数方向、线缆长度 (Resolution, output frequency, counting direction, cable length)	



橡胶线款
(Model with rubber wire)



金属铠甲款
(Model with metal armor)

MAGNETIC SENSOR 磁栅传感器

◎ RT系列 (RT SERIES)



■ 非接触测量, 零磨损

Non-contact measurement, zero wear

■ 工业标准数字信号输出

Industry standard digital signal output

■ 抗震、防油、防尘、防水、耐高温

Seismic, oil, dust, water, high temperature resistance

■ 宽电压, 高抗干扰

Wide voltage, high anti-interference

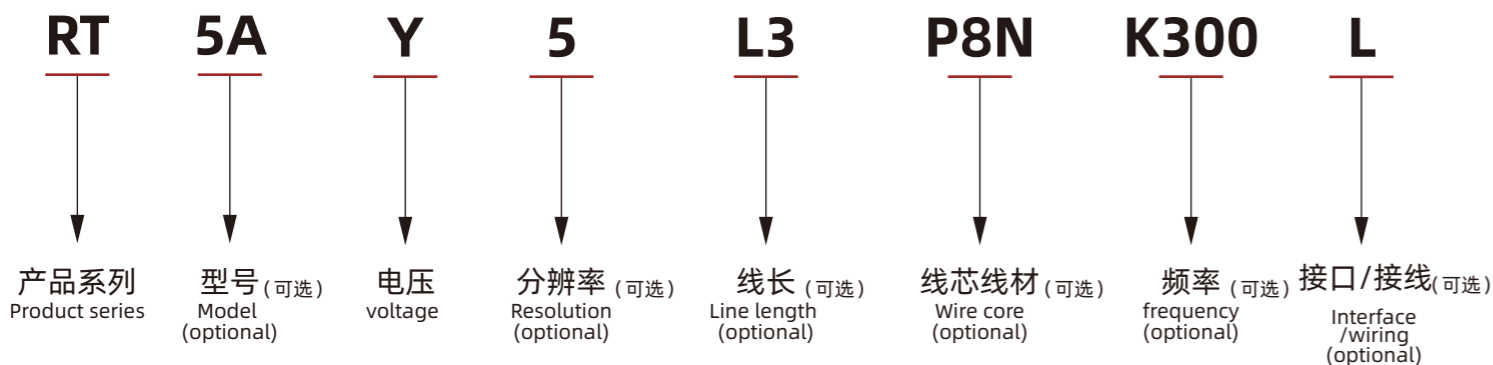
■ 智能警告指示灯

Intelligent warning light

■ 过热保护

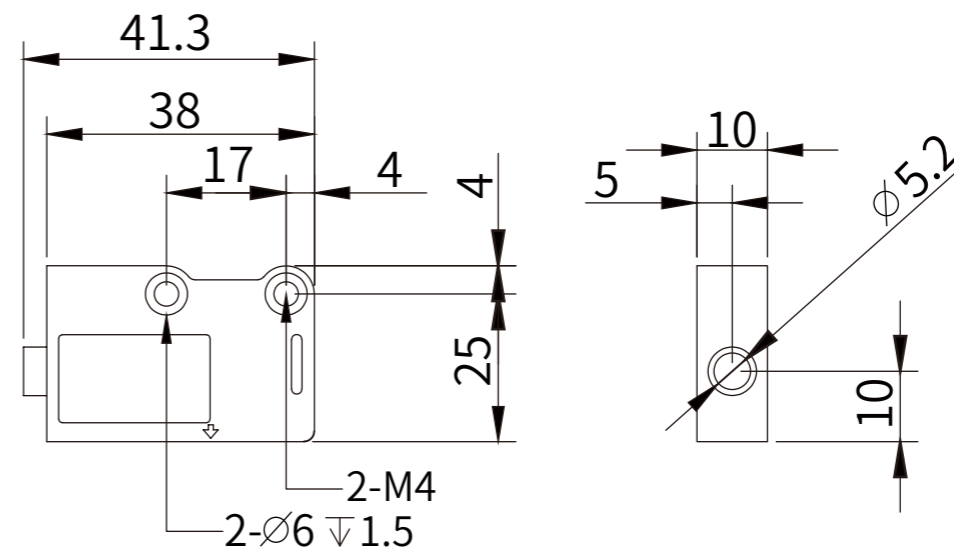
Overheat protection

◎ 订货型号 (ORDER TYPE)



◎ 技术参数 (TECHNICAL PARAMETER)

型号参数 (Type parameter)	RT
配套磁尺 (Matching magnetic ruler)	MS50
磁极距 (Magnetic pole distance)	5mm
工作电压 (Operating voltage)	5V-30V
分辨率 (Resolution)	Max.2.5 μ m
重复精度 (repeatability)	Max.±2.5 μ m/m
输出信号 (Output signal)	单端或差分 (Single-ended or differential)
安装间隙 (Installation clearance)	Max.2mm
移动速度 (Moving speed)	Max.20m/s
工作温度 (Operating temperature)	-30°C~ +80°C
保护等级 (Protection class)	IP68
输出形式 (Output form)	RS422/TTL
外观材质 (Appearance material)	锌合金 (Zinc alloy)
可定制参数 (Customizable parameter)	分辨率、输出频率、计数方向、线缆长度 (Resolution, output frequency, counting direction, cable length)



MAGNETIC SENSOR 磁栅传感器

◎ GS系列 (GS SERIES)



■ 非接触式测量，零磨损

Non-contact measurement, zero wear

■ 外形设计小巧，安装方便

Compact design, easy to install

■ 可定制最高输出频率

Maximum output frequency can be customized

■ 外置唯一零位（可选）

External unique zero (optional)

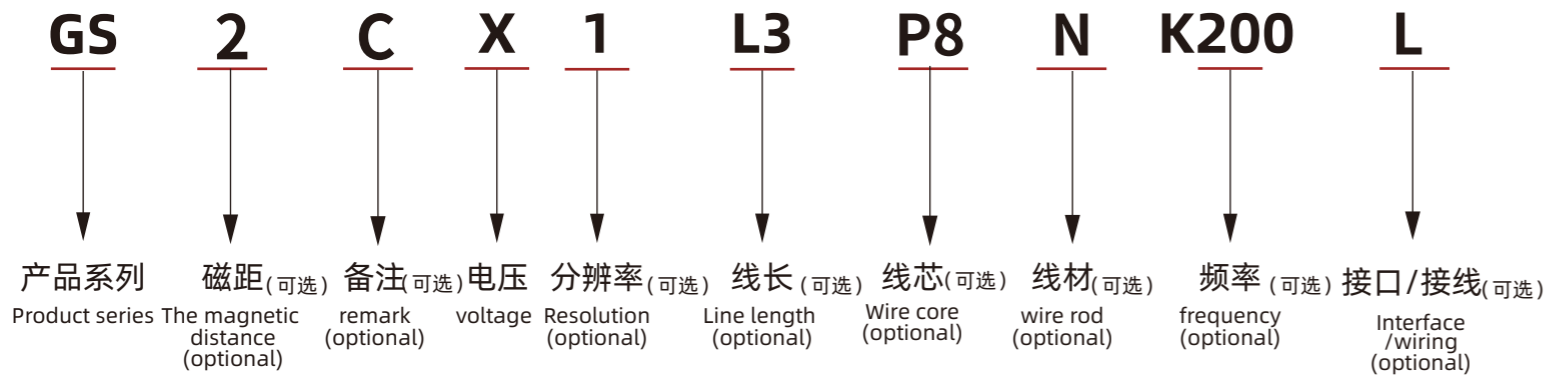
■ 最高分辨率0.1μm

Maximum resolution 0.1μm

■ 超千万次拖链次数

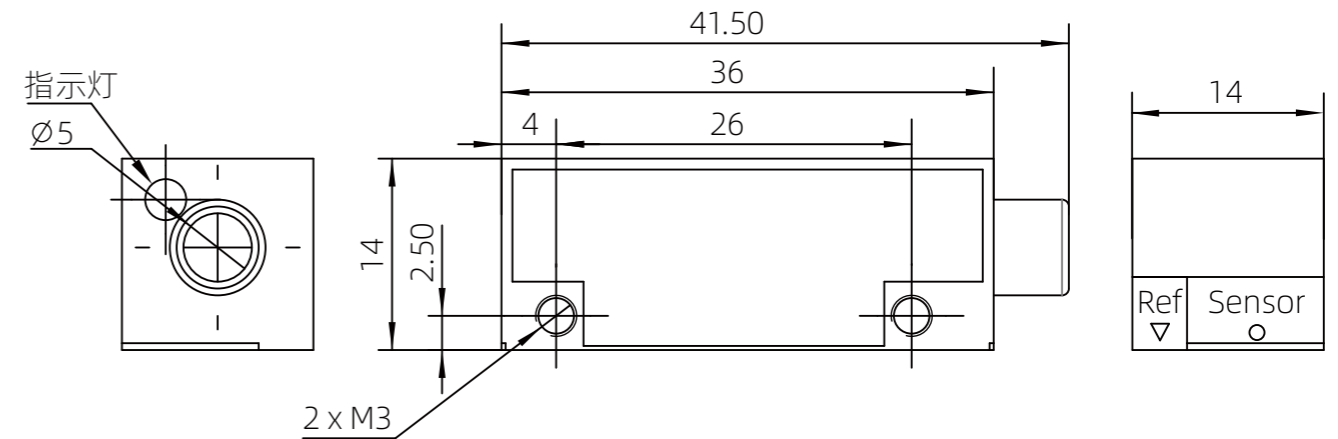
More than 10 million drag chain times

◎ 订货型号 (ORDER TYPE)



◎ 技术参数 (TECHNICAL PARAMETER)

型号参数 (Type parameter)	GS2C	GS2L
配套磁尺 (Matching magnetic ruler)	MS20	
磁极距 (Magnetic pole distance)	2mm	
工作电压 (Operating voltage)	5V	
分辨率 (Resolution)	Max.1μm	Max.0.1μm
重复精度 (repeatability)	Max.±2μm/m	Max.±0.5μm/m
输出信号 (Output signal)	RS422	
安装间隙 (Installation clearance)	Max.0.8mm	
移动速度 (Moving speed)	Max.4m/s	Max.2m/s
工作温度 (Operating temperature)	-20°C~ +80°C	
保护等级 (Protection class)	IP67	
输出形式 (Output form)	RS422	
外观材质 (Appearance material)	锌合金 (Zinc alloy)	
可定制参数 (Customizable parameter)	输出频率、计数方向、线缆长度 (output frequency, counting direction, cable length)	



MAGNETIC SENSOR 磁栅传感器

◎ KT系列 (KT SERIES)



■ 直线/旋转测量

Linear/rotational measurement

■ 非接触式测量, 零磨损

Non-contact measurement, zero wear

■ 直线电机专用

Special for linear motor

■ 正面/侧面双向安装

Two-way front/side mounting

■ 可定制最高输出频率

Maximum output frequency can be customized

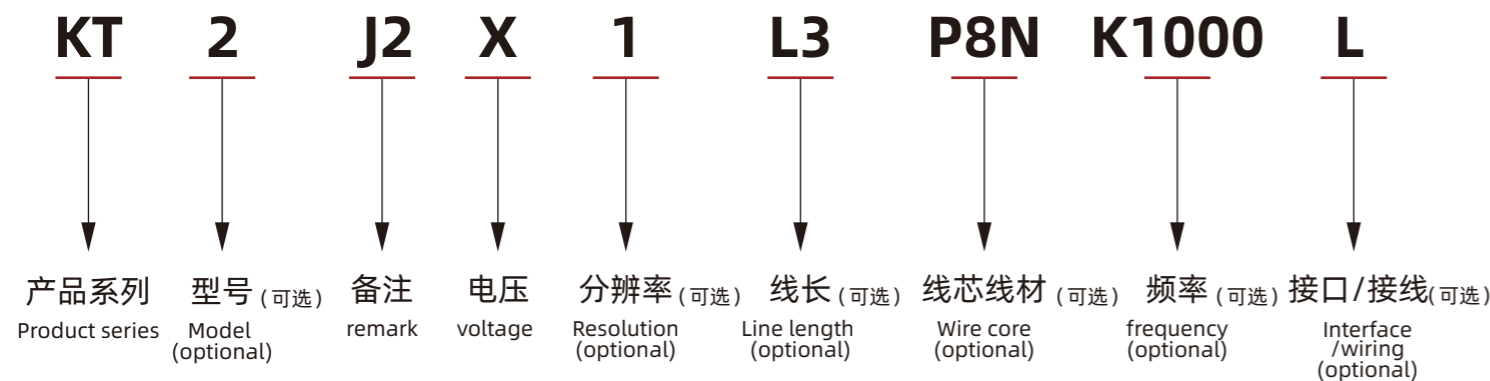
■ 外形设计小巧, 安装方便

Compact design, easy to install

■ 高系统精度, 高重复精度

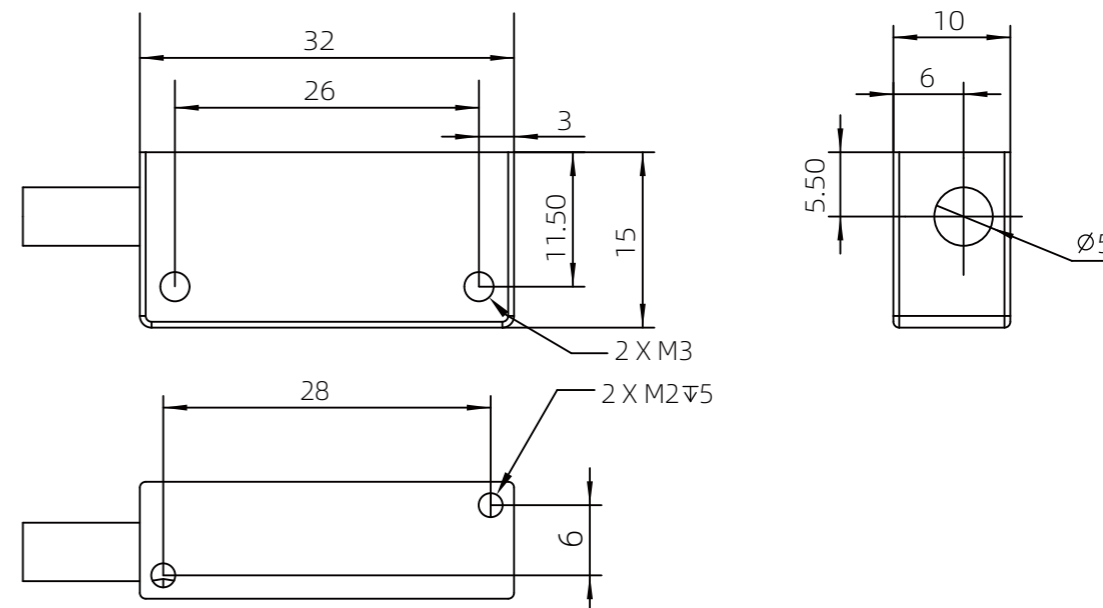
High system accuracy, high repetition accuracy

◎ 订货型号 (ORDER TYPE)



◎ 技术参数 (TECHNICAL PARAMETER)

型号参数 (Type parameter)	KT2
配套磁尺 (Matching magnetic ruler)	MS20
磁极距 (Magnetic pole distance)	2mm
工作电压 (Operating voltage)	5V±5%
分辨率 (Resolution)	Max.1μm
重复精度 (repeatability)	Min.±1个脉冲
输出信号 (Output signal)	RS422
安装间隙 (Installation clearance)	Max.0.8mm; 推荐0.3±0.2mm
移动速度 (Moving speed)	Max.4m/s
工作温度 (Operating temperature)	-10°C~ 70°C (没有结露状态); 保存时: -25°C~85°C
保护等级 (Protection class)	IP67 (IEC规格)
输出形式 (Output form)	RS422
外观材质 (Appearance material)	锌合金 (Zinc alloy)
可定制参数 (Customizable parameter)	分辨率、输出频率、计数方向、线缆长度 (Resolution, output frequency, counting direction, cable length)



MAGNETIC SENSOR 磁栅传感器

◎ GN系列 (GN SERIES)



■ 非接触测量, 零磨损
Non-contact measurement, zero wear

■ 超小尺寸, 节省安装空间
Ultra-small size saves installation space

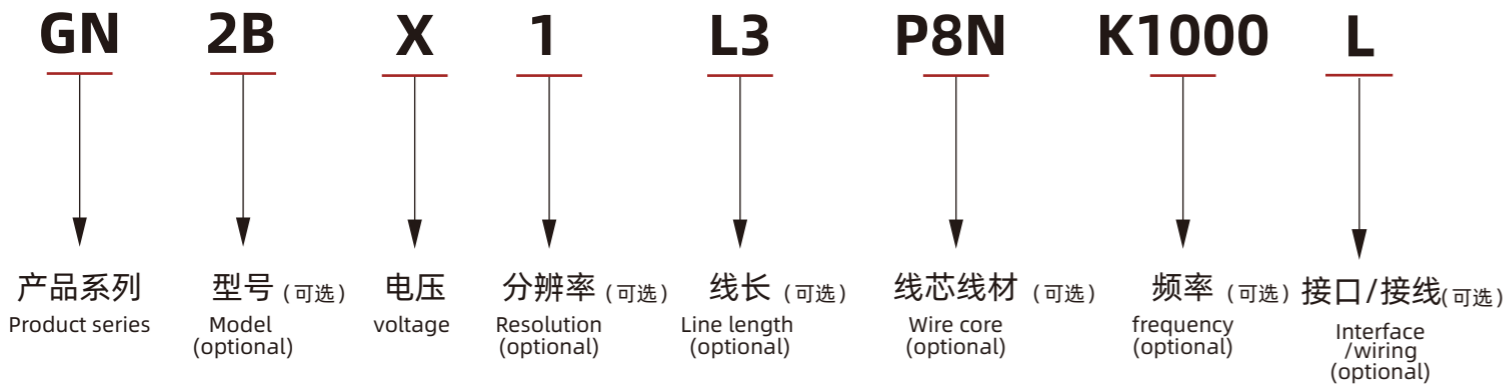
■ 抗震、防油、防尘、防水、耐高温
Seismic, oil, dust, water, high temperature resistance

■ 高分辨率
High resolution

■ 高重复精度
High repetition accuracy

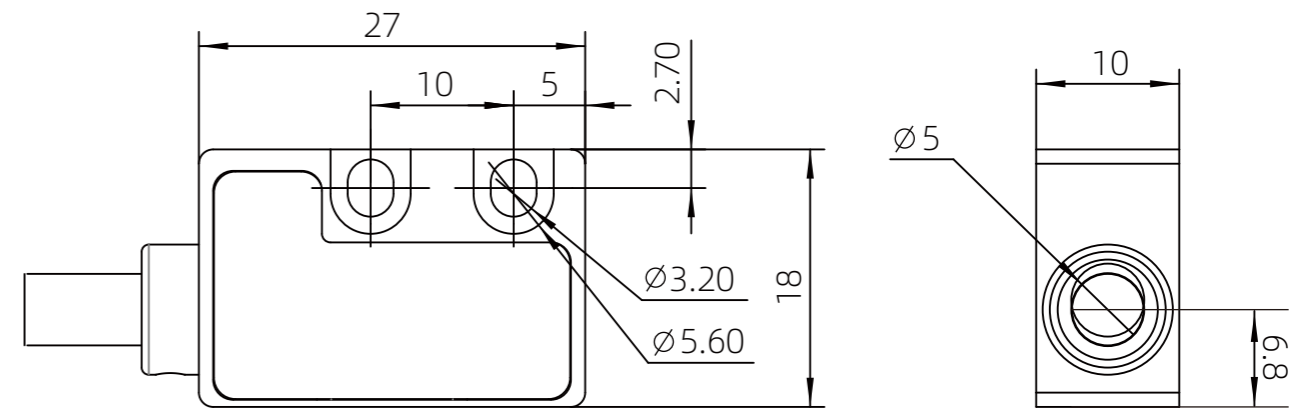
■ 超千万次拖链次数
More than 10 million drag chain times

◎ 订货型号 (ORDER TYPE)



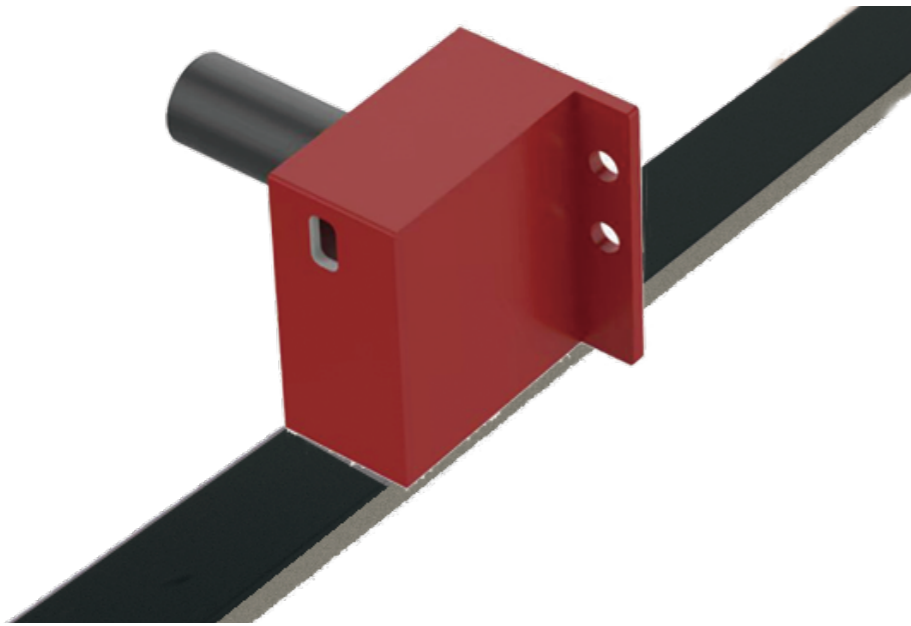
◎ 技术参数 (TECHNICAL PARAMETER)

型号参数 (Type parameter)	GN
配套磁尺 (Matching magnetic ruler)	MS20
磁极距 (Magnetic pole distance)	2mm
工作电压 (Operating voltage)	5V
分辨率 (Resolution)	Max.1μm
重复精度 (repeatability)	Max.±2μm/m
输出信号 (Output signal)	单端或差分 (Single-ended or differential)
安装间隙 (Installation clearance)	Max.0.5mm
移动速度 (Moving speed)	Max.4m/s
工作温度 (Operating temperature)	-20°C~ +80°C
保护等级 (Protection class)	IP67
输出形式 (Output form)	RS422
外观材质 (Appearance material)	锌合金 (Zinc alloy)
可定制参数 (Customizable parameter)	分辨率、输出频率、计数方向、线缆长度 (Resolution, output frequency, counting direction, cable length)



MAGNETIC SENSOR 磁栅传感器

◎ DF系列 (DF SERIES)



■ 定子节距范围宽

The stator pitch range is wide

■ 极强的抗油污能力

Strong oil resistance

■ 高安装间隙公差

High installation clearance tolerance

■ 定子反馈，无磁栅设计

Stator feedback, no magnetic grid design

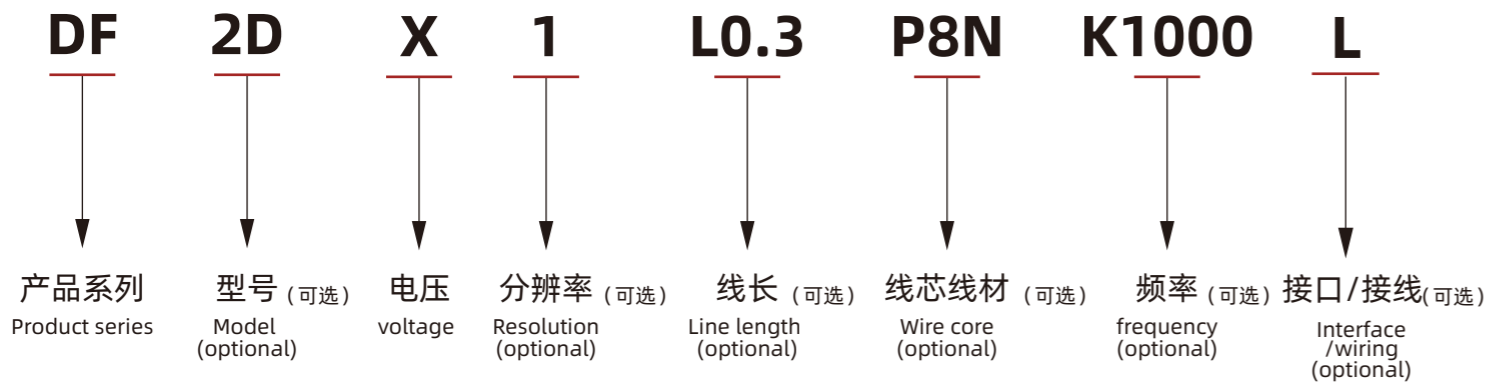
■ 安装方便，维护成本低

Easy to install and low maintenance cost

■ 极好的经济型

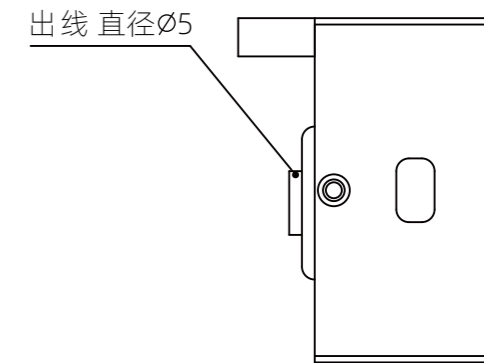
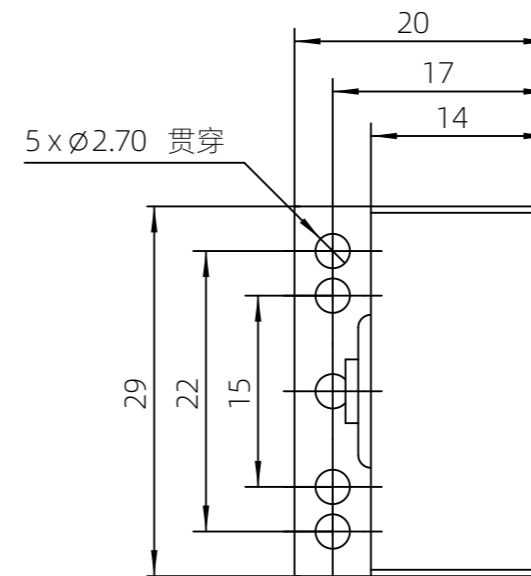
Excellent economy

◎ 订货型号 (ORDER TYPE)



◎ 技术参数 (TECHNICAL PARAMETER)

型号参数 (Type parameter)	DF
磁间距 (Matching magnetic ruler)	10mm, 20mm, 24mm, 或其它 (Or other)
工作电压 (Operating voltage)	5V
分辨率 (Resolution)	Max.1μm
重复精度 (repeatability)	Max.± 2μm
输出信号 (Output signal)	差分 (difference)
安装间隙 (Installation clearance)	Max.10mm
移动速度 (Moving speed)	Max.4m/s
工作温度 (Operating temperature)	-20°C~ +80°C
保护等级 (Protection class)	IP67
输出形式 (Output form)	RS422
外观材质 (Appearance material)	锌合金 (Zinc alloy)
可定制参数 (Customizable parameter)	分辨率、输出频率、计数方向、线缆长度 (Resolution, output frequency, counting direction, cable length)



ABSOLUTE VALUE SENSOR 绝对值传感器

◎ BS



■ 周期编码长度16384mm
Cycle coding length 16384mm

■ 支持BISS-C/SSI/RS485
Iss-c /SSI/RS485 is supported

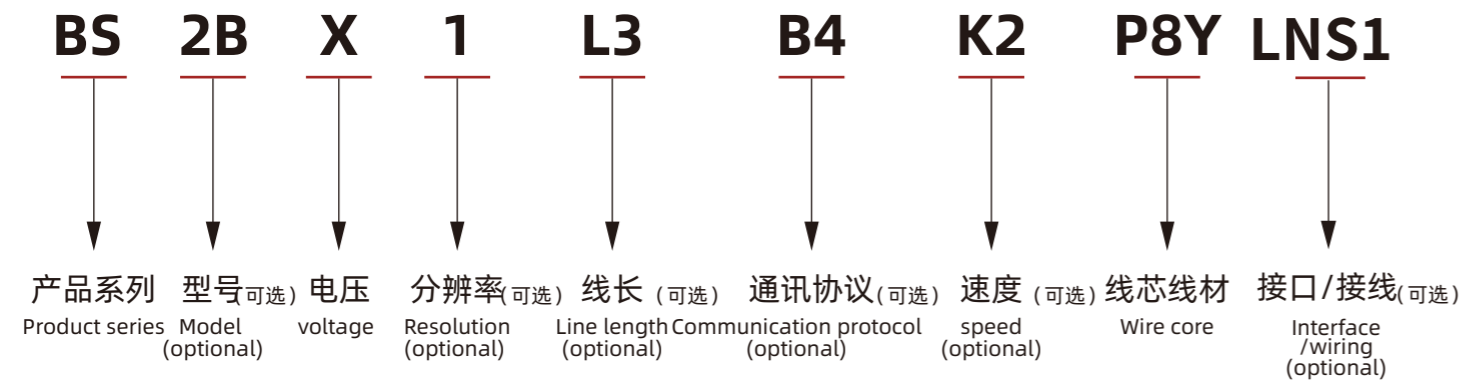
■ 专为精密制造和高端装备应用而设计
Designed for precision manufacturing and high-end equipment applications

■ 实时反馈当前位置
Real-time feedback on current position

■ 解决增量式编码器累计误差问题
Solve the cumulative error of incremental encoder problem

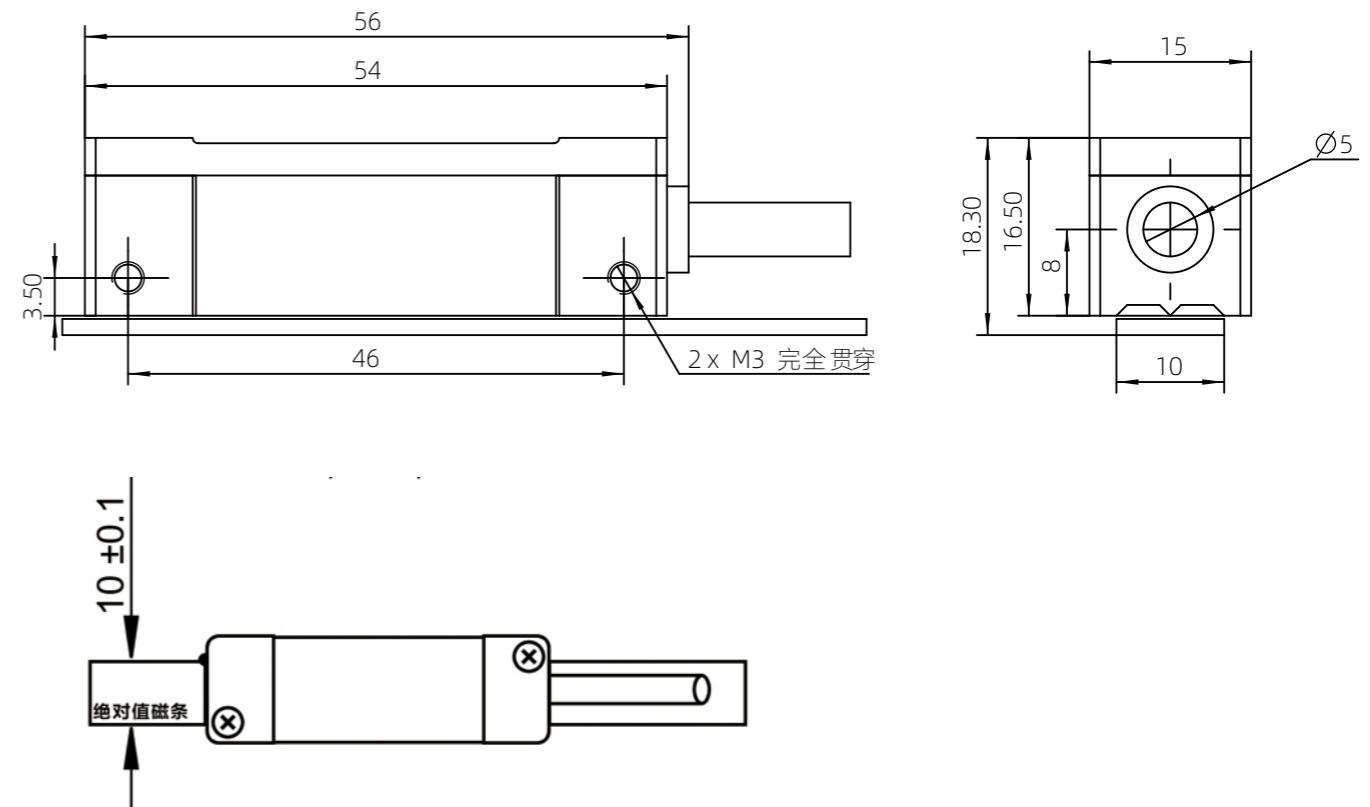
■ BS Link配套调试软件
BS Link supporting debugging software

◎ 订货型号 (ORDER TYPE)



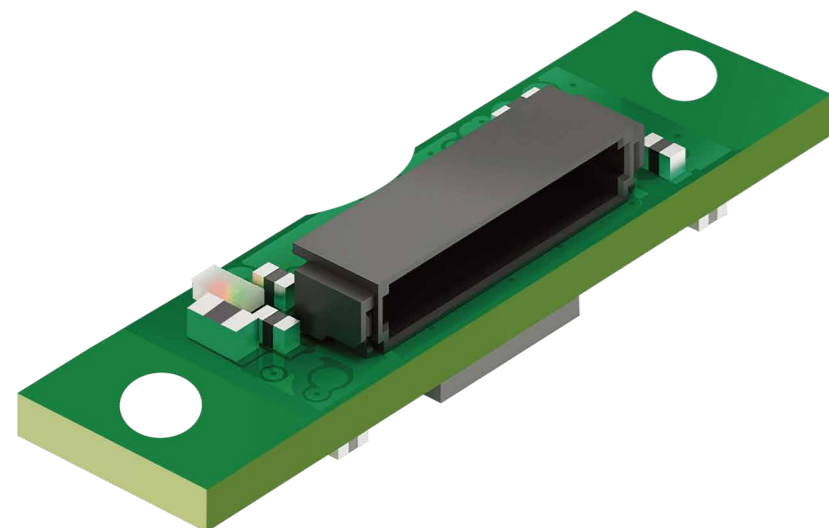
◎ 技术参数 (TECHNICAL PARAMETER)

型号参数 (Type parameter)	BS
供电电压 (Supply voltage)	5V ±5%
消耗电流 (Current consumption)	200mA以下 (无负荷)
磁间距 (Magnetic distance)	2mm
分辨率 (Resolution)	1μm (默认)
位置数据接口 (Location data interface)	BISS-C/SSI/RS485
重复精度 (repeatability)	Max.± 1μm
最大测量长度 (Maximum measuring length)	16.4m
最大速度 (Maximum speed)	Max. 4m/s
接线方式 (Connection mode)	DB9 (其它接口定制) (Other interface customization)
防护等级 (Class of protection)	IP68 (IEC规格)



ABSOLUTE VALUE SENSOR 绝对值传感器

◎ CS



■ 18 ~ 20位绝对分辨率

18-20 bit absolute resolution

■ 适用于各种狭小空间

Suitable for all kinds of small Spaces

■ 专为多轴机器人和自动化应用而设计

Designed for multi-axis robotics and automation applications

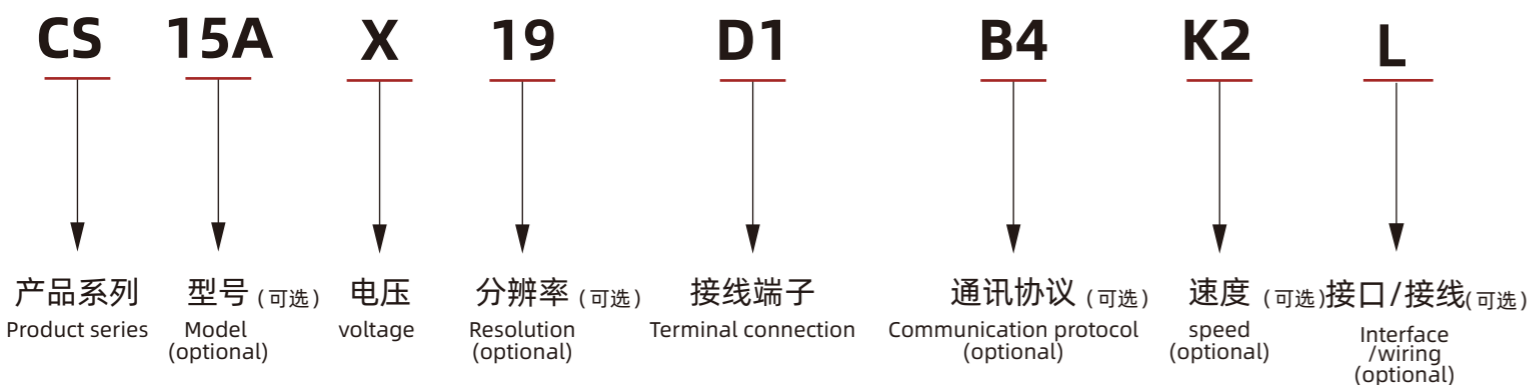
■ 非接触式，零磨损

Non-contact, zero wear

■ 用于线性或旋转应用

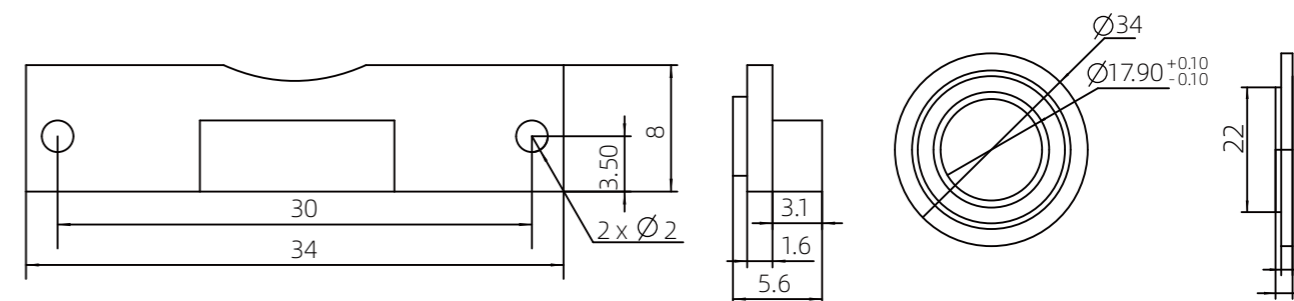
For linear or rotary applications

◎ 订货型号 (ORDER TYPE)



◎ 技术参数 (TECHNICAL PARAMETER)

型号参数 (Type parameter)	CS
绝对分辨率 (Absolute resolution)	18/19/20 bit
旋转速度 (Rotational speed)	18 位: 最高 24000 rpm; 19 位: 最高 12000 rpm; 20 位: 最高 6000 rpm 18-bit: Max.24,000 rpm; 19 bits:Max.12 000 rpm; 20 bits: Max.6 000 rpm
线性速度 (Linear velocity)	最高 10m/s (Max.10 m/s)
最佳距离 (Optimum distance)	最大0.5mm (Max.0.5)
电压 (voltage)	5 V ± 5 %
电流 (空载) (Current (no load))	<60mA±5% (UB = 5.0V)
LED灯 (LED light)	绿色 = 设备开启, 红色 = 设置错误 (需要调整) Green = Device on, red = setting error (need to be adjusted)
工作温度 (Operating temperature)	-10°C ~ +80 °C
储存温度 (Storage temperature)	-25°C ~ +85 °C
位置数据接口 (Location data interface)	BISS-C/SSI (可选) (Optional)
抗震性 (Shock resistance)	50m/s ² ,10-200Hz
接线方式 (Connection mode)	端子接线 (Terminal connection)
防护等级 (Class of protection)	IP67



MAGNETIC SENSOR 磁栅传感器

◎ IG系列 (IG SERIES)



■ 非接触式测量，零磨损

Non-contact measurement, zero wear

■ 外形设计小巧，安装方便

Compact design, easy to install

■ 优异的性能，超高性价比

Excellent performance, high cost performance

■ 支持1vpp正余弦输出

Supports 1vpp sine and cosine output

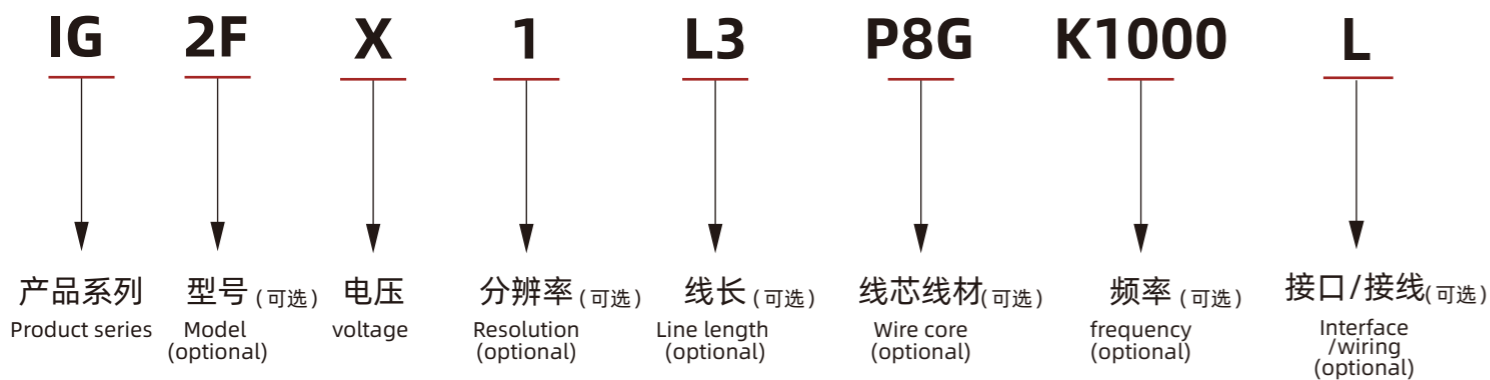
■ 直线电机专用

Special for linear motor

■ 高系统精度，高重复精度

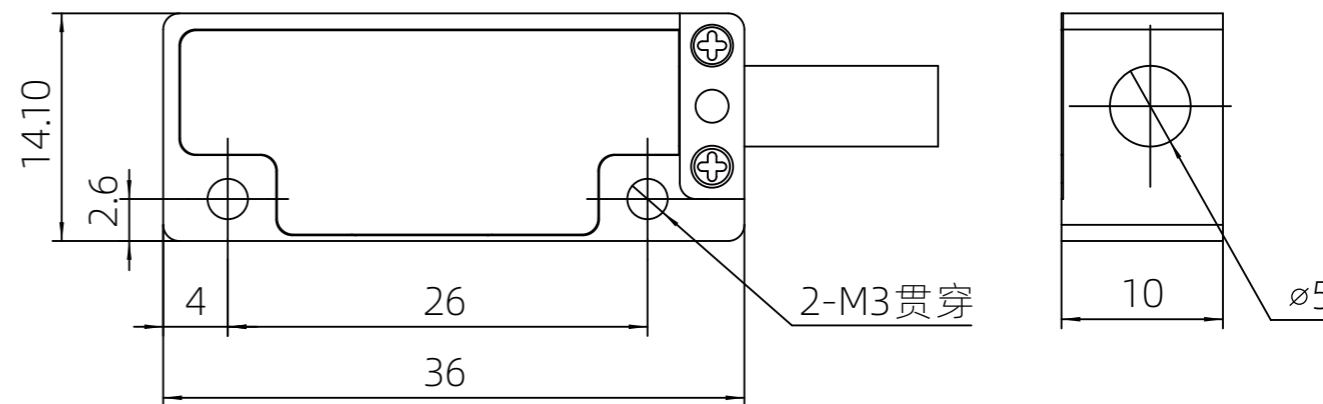
High system accuracy, high repetition accuracy

◎ 订货型号 (ORDER TYPE)



◎ 技术参数 (TECHNICAL PARAMETER)

型号参数 (Type parameter)	IG2F	IG2S
配套磁尺 (Matching magnetic ruler)	MS20	
磁极距 (Magnetic pole distance)	2mm	
工作电压 (Operating voltage)	5V	
分辨率 (Resolution)	Max. 1μm	
重复精度 (repeatability)	Max. ±2μm/m	
输出信号 (Output signal)	RS422	1vpp
安装间隙 (Installation clearance)	Max.0.8mm (最佳推荐: 0.3±0.1mm) Best recommendation	
移动速度 (Moving speed)	Max.4m/s	
工作温度 (Operating temperature)	-20°C~ +80°C	
保护等级 (Protection class)	IP67	
输出接口 (Output interface)	DB9、DB15、航空接头、裸线 (Aviation connector, bare wire)	
外观材质 (Appearance material)	铝合金 (Aluminium alloy)	
可定制参数 (Customizable parameter)	输出频率、计数方向、线缆长度 (output frequency, counting direction, cable length)	



MAGNETIC SENSOR 磁栅传感器

◎ KMxB系列 (KMxB SERIES)



■ 外形设计小巧，安装方便

Compact design, easy to install

■ 工业标准数字信号输出

Industry standard digital signal output

■ 抗震、防油、防尘、防水、耐高温

Seismic, oil, dust, water, high temperature resistance

■ 非接触式测量，零磨损

Non-contact measurement, zero loss

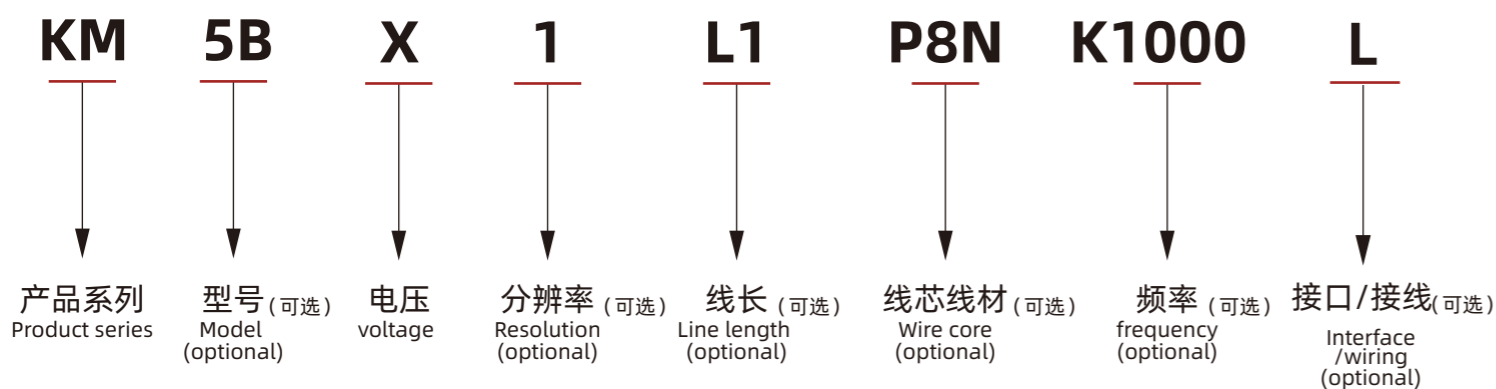
■ 多孔位安装

The straight line length can reach more than 100 meters

■ 可任意设定原点位置

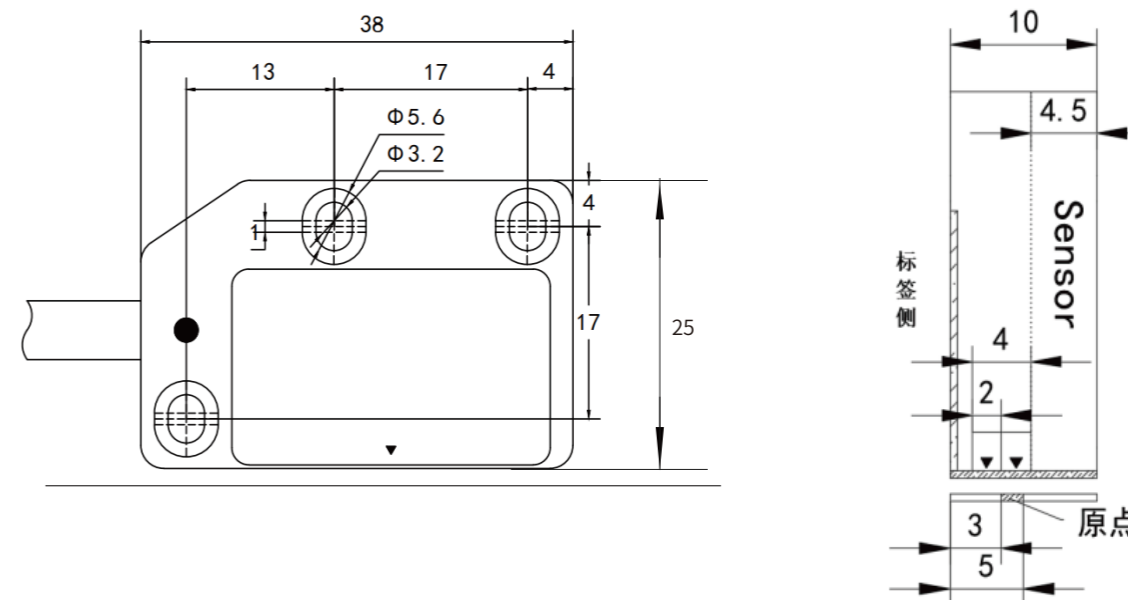
Accurately measure the length and acceleration

◎ 订货型号 (ORDER TYPE)



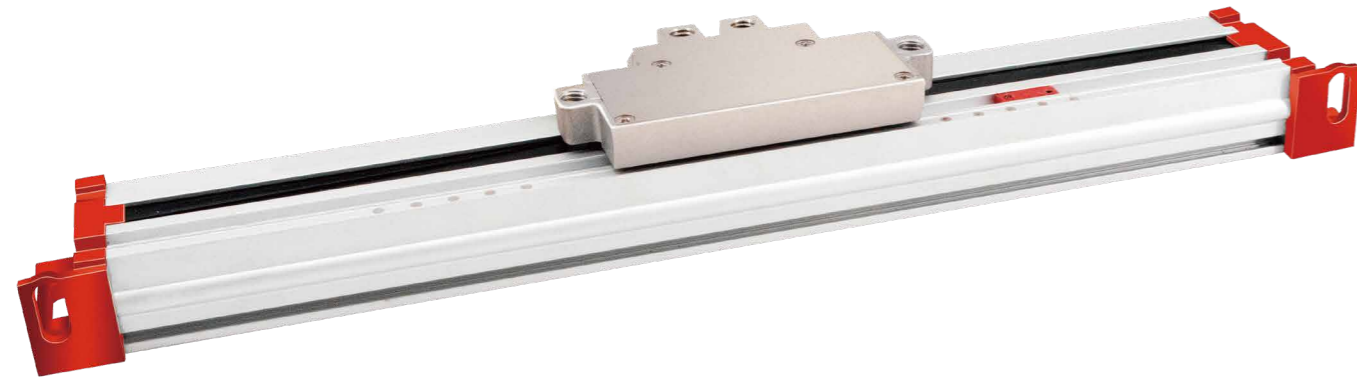
◎ 技术参数 (TECHNICAL PARAMETER)

型号参数 (Type parameter)	KM5B	KM2B0
配套磁尺 (Matching magnetic ruler)	MS50	MS20
磁极距 (Magnetic pole distance)	5mm	2mm
工作电压 (Operating voltage)	5V - 30V	
分辨率 (Resolution)	Max.2.5μm	Max.1μm
重复精度 (repeatability)	Max.±2.5μm/m	Max.±2μm/m
输出信号 (Output signal)	单端或差分 (Single-ended or differential)	
安装间隙 (Installation clearance)	Max.2mm	Max.0.6mm
移动速度 (Moving speed)	Max.20m/s	Max.4m/s
工作温度 (Operating temperature)	-20°C~ +80°C	
保护等级 (Protection class)	IP67	
输出形式 (Output form)	RS422/TTL	
外观材质 (Appearance material)	铝合金 (Aluminium alloy)	
可定制参数 (Customizable parameter)	分辨率、输出频率、计数方向、线缆长度、原点功能 (Resolution, output frequency, counting direction, cable length, Origin function)	



MAGNETIC SENSOR 磁栅传感器

◎ DST



■ 分辨率可达±1μm

Resolution up to ±1μm

■ 一体式带滑轨结构

Integrated structure with slide rail

■ 优异的性能，超高性价比

Excellent performance, high cost performance

■ 适用于电液同步设备

Suitable for electro-hydraulic synchronization equipment

■ 每10mm可调节唯一原点位置

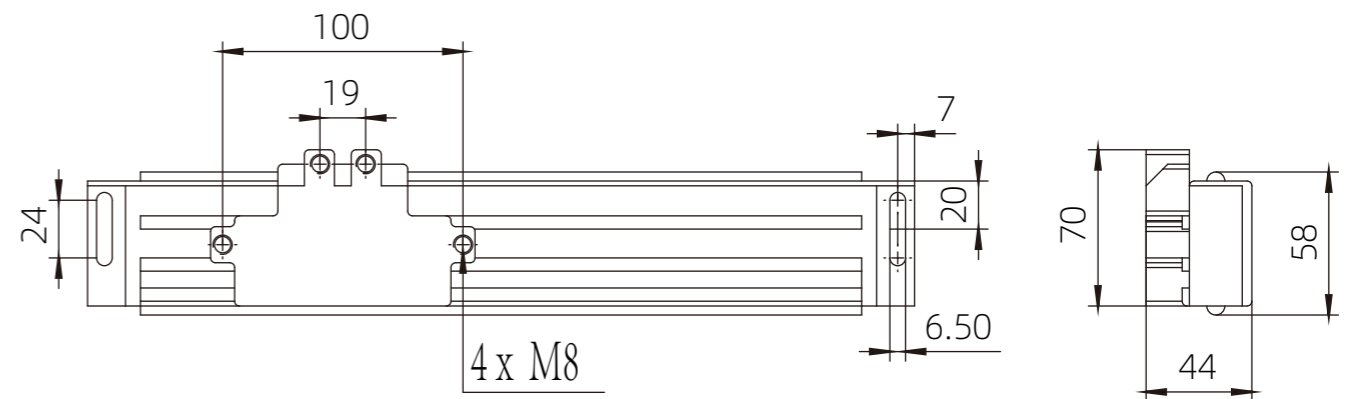
The unique origin position is adjustable every 10mm

◎ 订货型号 (ORDER TYPE)

DST	1	R220	L100	C3	V05	L
产品系列 Product series	分辨率(可选) Resolution (optional)	有效行程 Effective stroke	原点位置(可选) Origin position (optional)	线长(可选) Line length (optional)	电压(可选) voltage (optional)	裸线 Bare wire

◎ 技术参数 (TECHNICAL PARAMETER)

型号参数 (Type parameter)	DST
极距 (Polar distance)	2+2mm / 5+5mm
参考索引 (Reference index)	E = 可选 (每10毫米) (E = Optional (per 10 mm))
可重复性 (Repeatability)	± 1增量 (increment)
精度等级 (Precision class)	±15μm
测量长度ML (Measuring length)	170、220、270、320、370、420、470、520、570、620、720mm
加速度 (Acceleration)	Max. 30 m/s ²
抗振性(EN 60068-2-6) (Vibration resistance)	100 m/s ² [55-2000 Hz]
防护等级 (Class of protection)	IP64 (标准) IP67 (定制) (Standard) - (custom)
电力供应 (Power supply)	5~30 Vdc+5%
电流消耗 (Current consumption)	100 mA Max
A、B、Z输出信号 (Output signal)	TTL/HTL/RS422
电缆长度 (Cable length)	0.5 (可定制) (Customizable)
电气保护 (Electrical protection)	极性反转和短路 (Polarity reversals and short circuits)



DISPLACEMENT DIGITAL DISPLAY TABLE

位移数显表

◎ M503



■ 多功能菜单，可自由设定参数

Multi-function menu with free parameter setting

■ 准绝对式测量

Quasi-absolute measurement

■ 初始值自定义功能

Initial value user-defined function

■ 非接触式测量，零磨损

Non-contact measurement, zero wear

■ 低功耗，内置电池

Low power consumption, built-in battery

■ 多段线性补偿

Multistage linear compensation

■ 长度/角度，绝对/相对，毫米/英寸，多档可调

Length/Angle, absolute/relative; mm/inch, multi-gear adjustable

◎ 订货型号 (ORDER TYPE)

M503 - 0.5C - 1.5V - N

产品系列
Product series

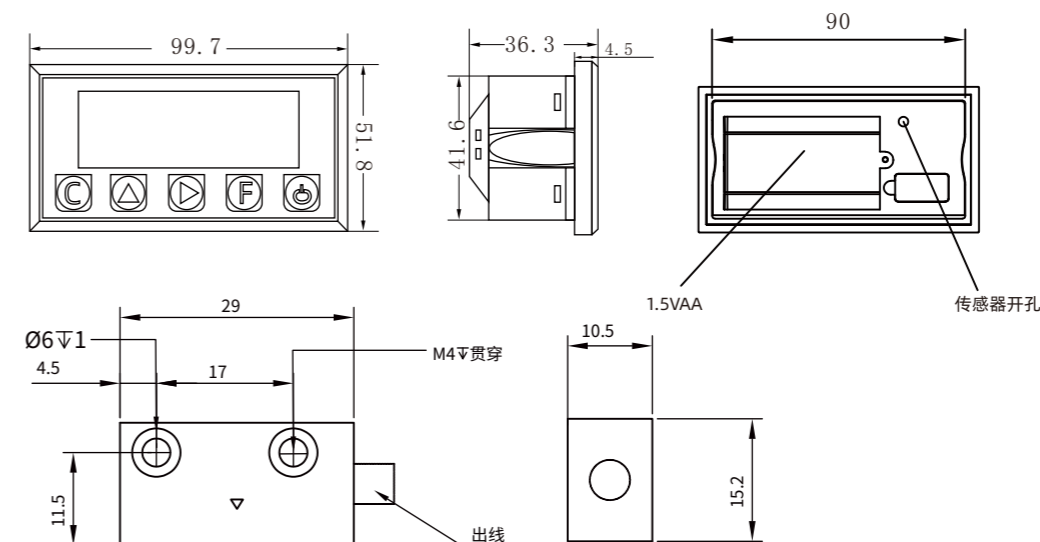
线长 (可选)
Line length (optional)

电压
voltage

其它
other

◎ 技术参数 (TECHNICAL PARAMETER)

型号参数 (Type parameter)	M503
配套磁尺 (Matching magnetic ruler)	MS50
磁极距 (Magnetic pole distance)	5mm
工作电压 (Operating voltage)	1.5 V DC
电流消耗 (Current consumption)	≤600 μA
分辨率 (Resolution)	MM/DEG: 1, 0.1, 0.01; inch: 0.001
显示范围 (Display range)	-1999999 ~ 1999999
系统精度 (System accuracy)	± (0.05+0.02*L) mm
重复精度 (Repeatability)	Max.±10μm
开口尺寸 (Opening size)	90×42mm
移动速度 (Moving speed)	Max.3m/s
外壳结构 (Shell structure)	嵌入式套件 (Embedded kit)
读头间隙 (Read head gap)	Max.1.5mm
工作温度 (Operating temperature)	-10°C~ +60°C
存储温度 (Storage temperature)	-20°C ~ +70 °C
防护等级 (Class of protection)	数显表 IP40, 传感器 IP67 (Digital display meter IP40, sensor IP67)
可定制 (customizable)	线长可按需定制 (Line length can be customized)



DISPLACEMENT DIGITAL DISPLAY TABLE

位移数显表

◎ M506



■ 微型尺寸，嵌入式安装

Micro size, built-in mount

■ 初始值自定义功能

Initial value user-defined function

■ 长度/角度，绝对/相对，毫米/英寸，多档可调

Length/Angle, absolute/relative; mm/inch, multi-gear adjustable

■ 低功耗，内置电池

Low power consumption, built-in battery

■ 多段线性补偿

Multistage linear compensation

■ 非接触式测量，零磨损

Non-contact measurement, zero wear

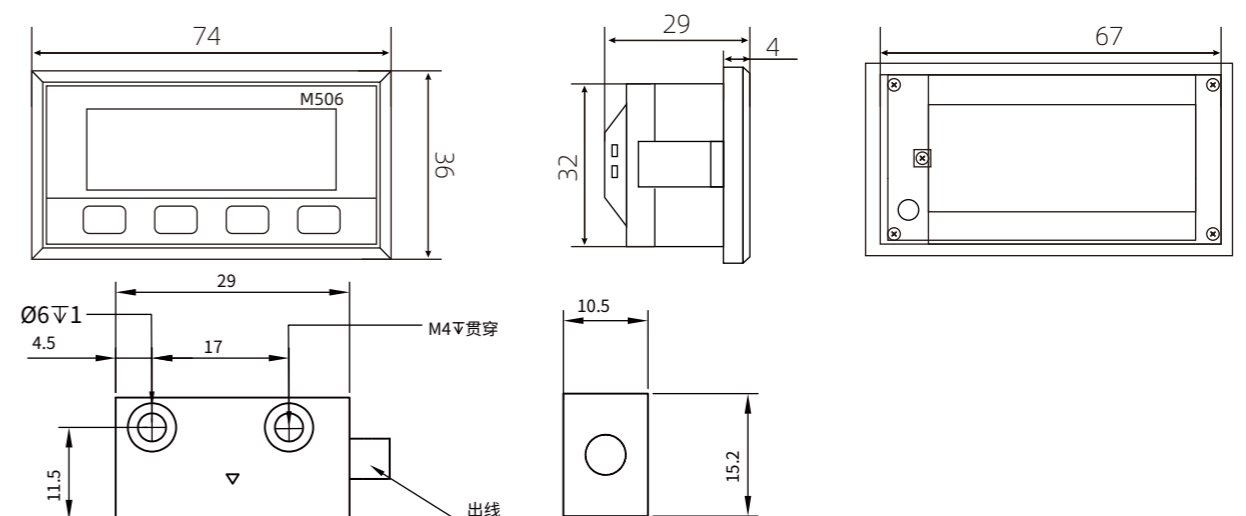
◎ 订货型号 (ORDER TYPE)

M506 - 1C - 1.5V - N

产品系列
Product series线长 (可选)
Line length (optional)电压
voltage其它
other

◎ 技术参数 (TECHNICAL PARAMETER)

型号参数 (Type parameter)	M506
配套磁尺 (Matching magnetic ruler)	MS50
磁极距 (Magnetic pole distance)	5mm
工作电压 (Operating voltage)	1.5 V DC
电流消耗 (Current consumption)	≤600 μA
分辨率 (Resolution)	MM/DEG: 1, 0.1, 0.01; inch: 0.001
显示范围 (Display range)	-1999999 ~ 1999999
系统精度 (System accuracy)	± (0.05+0.02*L) mm
重复精度 (Repeatability)	Max.±10μm
开口尺寸 (Opening size)	67×32mm
移动速度 (Moving speed)	Max.3m/s
外壳结构 (Shell structure)	嵌入式套件 (Embedded kit)
读头间隙 (Read head gap)	Max.1.5mm
工作温度 (Operating temperature)	-10°C~ +60°C
存储温度 (Storage temperature)	-20°C ~ +70 °C
防护等级 (Class of protection)	数显表 IP40, 传感器 IP67 (Digital display meter IP40, sensor IP67)
可定制 (customizable)	线长可按需定制 (Line length can be customized)



DISPLACEMENT DIGITAL DISPLAY TABLE

位移数显表

◎ M51S



■ 多段线性补偿

Multistage linear compensation

■ 准绝对式测量

Quasi-absolute measurement

■ 高亮度、高对比度数码管显示

High brightness, high contrast digital tube display

■ 非接触式测量，零磨损

Non-contact measurement, zero wear

■ 可定制RS485/0-10V

/4-20mA/两路继电器输出
RS485/0-10V/4-20mA/ two relay outputs can be customized

■ 初始值自定义功能

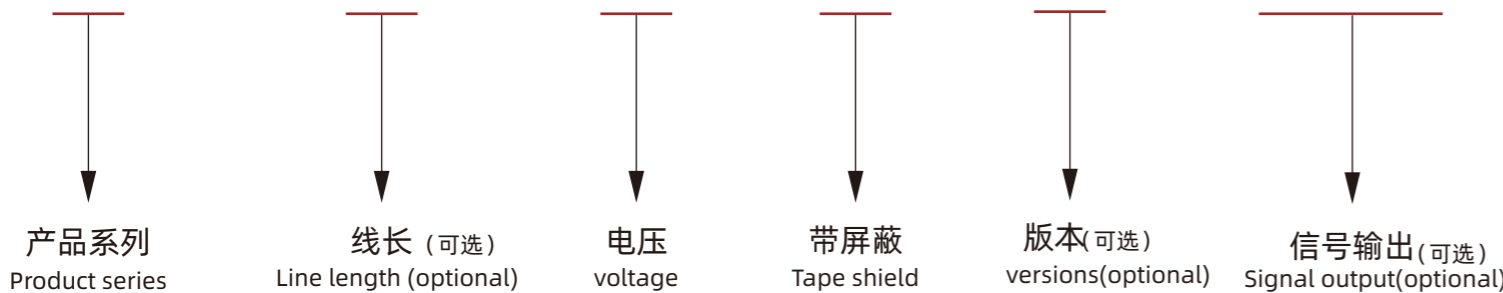
Initial value user-defined function

■ 长度/角度，绝对/相对，毫米/英寸，多档可调

Length/Angle, absolute/relative; mm/inch, multi-gear adjustable

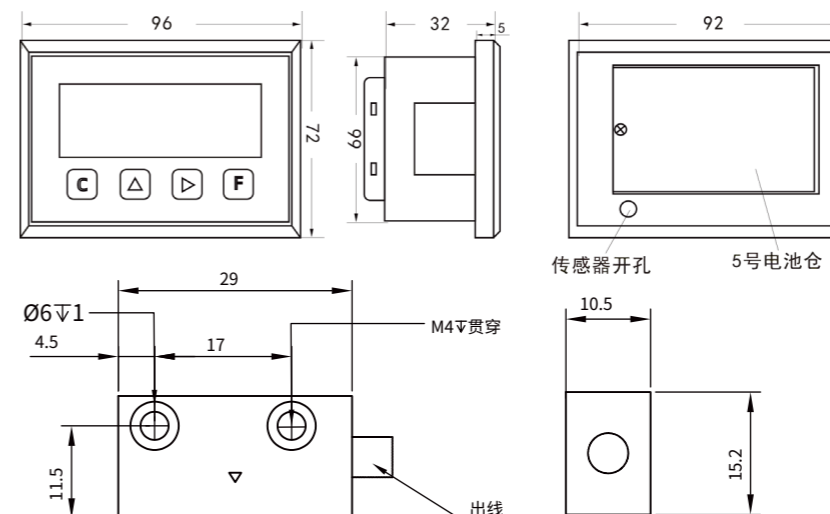
◎ 订货型号 (ORDER TYPE)

M51S - 3C - 24V - P - L1 - 485/RLY2



◎ 技术参数 (TECHNICAL PARAMETER)

型号参数 (Type parameter)	M51S
配套磁尺 (Matching magnetic ruler)	MS50
磁极距 (Magnetic pole distance)	5mm
工作电压 (Operating voltage)	12-24 V DC
电流消耗 (Current consumption)	≤600 μA
分辨率 (Resolution)	MM/DEG: 1, 0.1, 0.01; inch: 0.001
显示范围 (Display range)	-199999 ~ 999999
系统精度 (System accuracy)	± (0.05+0.02*L) mm
重复精度 (Repeatability)	Max.±10μm
开口尺寸 (Opening size)	92×66mm
移动速度 (Moving speed)	Max.3m/s
外壳结构 (Shell structure)	嵌入式套件 (Embedded kit)
读头间隙 (Read head gap)	Max.1.5mm
工作温度 (Operating temperature)	-10°C~ +60°C
存储温度 (Storage temperature)	-20°C ~ +70 °C
防护等级 (Class of protection)	数显表 IP40, 传感器 IP67 (Digital display meter IP40, sensor IP67)
可定制 (customizable)	线长、RS485、两路继电器可按需定制 (Line length, RS485, two relay can be customized)



DISPLACEMENT DIGITAL DISPLAY TABLE

位移数显表

◎ M51E



■ 双排红色数码管

Double rows of red digital tubes

■ A, B双轴支持RS485通信

A, B dual-axis support RS485 communication

■ 双读头独立工作

Double read heads work independently

■ 非接触式测量, 零磨损

Non-contact measurement, zero wear

■ 初始值自定义功能

Initial value user-defined function

■ 准绝对式测量, 自带电池保存数据

Quasi-absolute measurement with built-in battery to store data

■ 长度/角度, 绝对/相对, 毫米/英寸, 多档可调

Length/Angle, absolute/relative; mm/inch, multi-gear adjustable

◎ 订货型号 (ORDER TYPE)

M51E - A3CB3C - 24V - P - 485

产品系列
Product series

线长 (可选)
Line length (optional)

电压
voltage

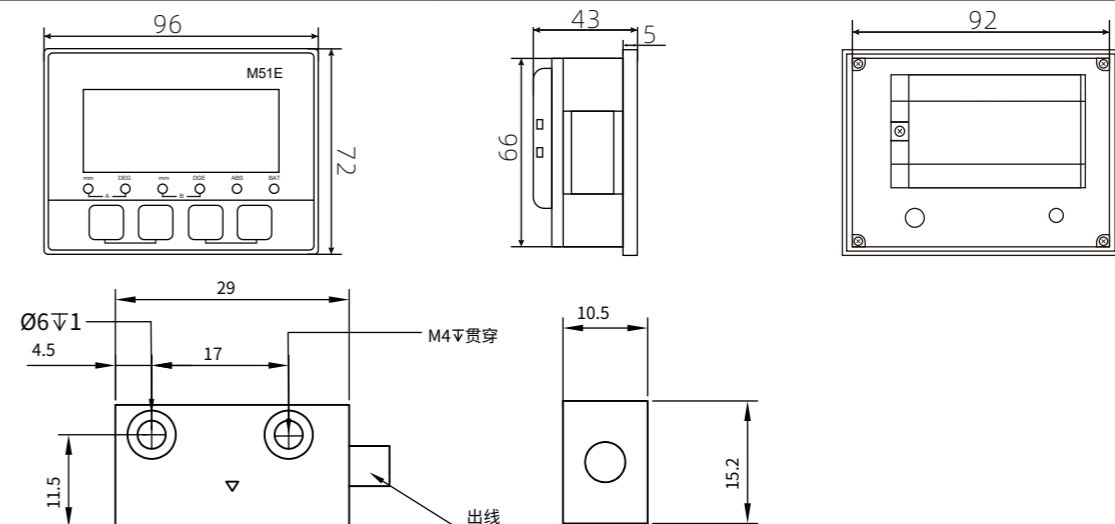
带屏蔽
Tape shield

信号输出 (可选)
Signal output (optional)



◎ 技术参数 (TECHNICAL PARAMETER)

型号参数 (Type parameter)	M51E
配套磁尺 (Matching magnetic ruler)	MS50
磁极距 (Magnetic pole distance)	5mm
工作电压 (Operating voltage)	12V -24 V DC
待机电流 (Standby current)	900μA
分辨率 (Resolution)	MM/DEG: 1, 0.1, 0.01
显示范围 (Display range)	-1999999 ~ 9999999
系统精度 (System accuracy)	± (0.03+0.02*L) mm
重复精度 (Repeatability)	Max.±10μm
开口尺寸 (Opening size)	92×66mm
移动速度 (Moving speed)	Max.3m/s
外壳结构 (Shell structure)	嵌入式套件 (Embedded kit)
读头间隙 (Read head gap)	Max.1.5mm
工作温度 (Operating temperature)	-10°C~ +60°C
存储温度 (Storage temperature)	-20°C ~ +70 °C
防护等级 (Class of protection)	数显表 IP40, 传感器 IP67 (Digital display meter IP40, sensor IP67)
可定制 (customizable)	线长可按需定制 (Line length can be customized)



DISPLACEMENT DIGITAL DISPLAY TABLE

位移数显表

◎ S35



- **三轴数显，可选单轴双轴显示**
Three-axis digital display, optional single-axis dual-axis display
- **全彩液晶，内置锂电池保存数据**
Full color LCD, built-in car battery to save data
- **准绝对式测量**
Quasi-absolute measurement
- **多段线性补偿**
Multistage linear compensation
- **初始值自定义功能**
Initial value user-defined function
- **长度/角度，毫米/英寸**
Length/Angle, mm/inch
- **非接触式测量，零磨损**
Non-contact measurement, zero wear
- **可定制RS485通讯功能**
RS485 communication function can be customized

◎ 订货型号 (ORDER TYPE)

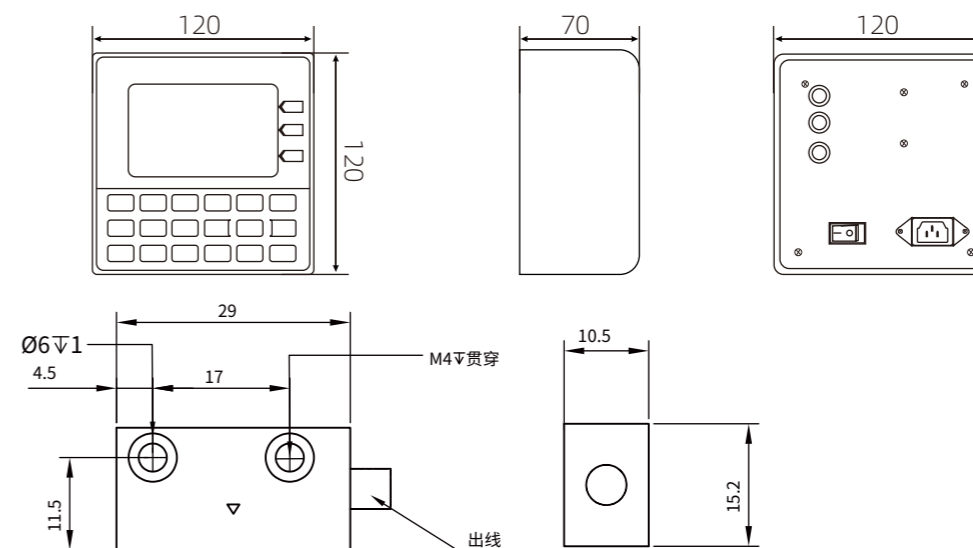
S35 - X3C Y3C Z3C - 220V - P - F - G L

- 产品系列
Product series
- 轴数线长 (可选)
Axis number line length (optional)
- 电压
voltage
- 带屏蔽
Tape shield
- 插头
plug
- 航空插头
Aviation plug
- 壳体
shell



◎ 技术参数 (TECHNICAL PARAMETER)

型号参数 (Type parameter)	S35
配套磁尺 (Matching magnetic ruler)	MS50
磁极距 (Magnetic pole distance)	5mm
工作电压 (Operating voltage)	台式 220 V AC; 内嵌式 12V DC
仪表尺寸 (Meter size)	120×120×70mm
分辨率 (Resolution)	MM/DEG: 0.1, 0.01; inch: 0.001
显示范围 (Display range)	-999999 ~ 999999
系统精度 (System accuracy)	± (0.05+0.02*L) mm
重复精度 (Repeatability)	Max.±10μm
通讯输出 (Communication output)	RS485
移动速度 (Moving speed)	Max.3m/s
外壳结构 (Shell structure)	台式 (Table type)/内嵌式 (embedded); 铝合金 (Aluminium alloy)
读头间隙 (Read head gap)	Max.1.5mm
工作温度 (Operating temperature)	-10°C~ +60°C
存储温度 (Storage temperature)	-20°C ~ +70 °C
防护等级 (Class of protection)	数显表 IP40, 传感器 IP67 (Digital display meter IP40, sensor IP67)
可定制 (customizable)	线长可按需定制 (Line length can be customized)



DISPLACEMENT DIGITAL DISPLAY TABLE

位移数显表

◎ M601



■ 单轴数显, RS485通讯输出

Single axis digital display, RS485 communication output

■ 可选毫米mm/英寸inch/角度°

Optional mm/inch/ Angle

■ 可选直线测量/角度测量

Optional line measurement/Angle measurement

■ 外接磁栅/光栅传感器

External magnetic gate/grating sensor

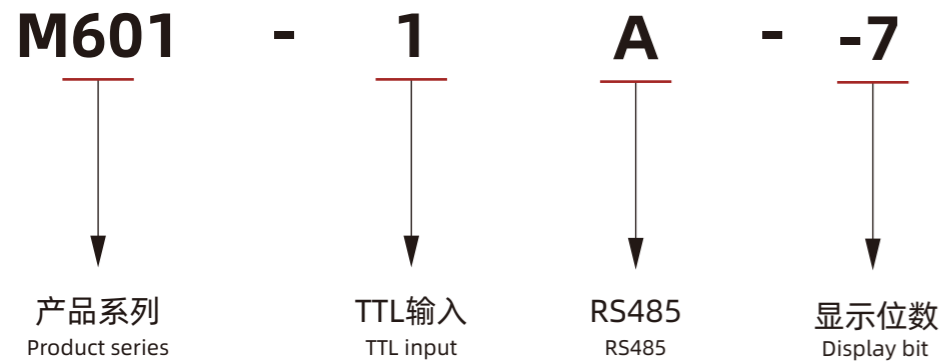
■ 断电记忆保存

Power-off memory preservation

■ 多段线性补偿

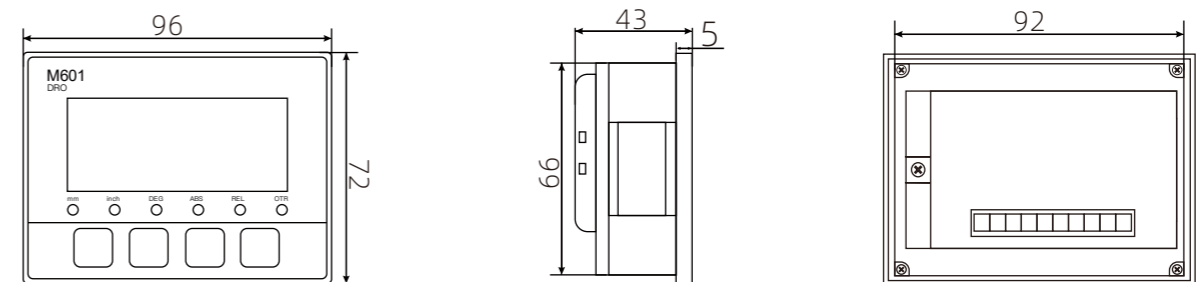
Multistage linear compensation

◎ 订货型号 (ORDER TYPE)



◎ 技术参数 (TECHNICAL PARAMETER)

型号参数 (Type parameter)	M601
配套输入 (Matching input)	磁栅传感器, 光栅传感器 (Magnetic grid sensor, grating sensor)
工作电压 (Operating voltage)	9 - 24 V DC
电流消耗 (Current consumption)	Max.65mA
分辨率 (Resolution)	0.001、0.002、0.005、0.01、0.02、0.025、0.05、0.1mm
显示范围 (Display range)	-1999999 ~ 1999999
计数频率 (Counting frequency)	Max.500KHZ
输入信号 (Input signal)	TTL
开口尺寸 (Opening size)	92×66mm
外壳结构 (Shell structure)	嵌入式套件 (Embedded kit)
工作温度 (Operating temperature)	0°C~ +60°C
存储温度 (Storage temperature)	-20°C ~ +70 °C
防护等级 (Class of protection)	数显表 IP40 (Digital display meter IP40)
可定制 (customizable)	RS485通讯功能 (RS485 communication function)



MAGNETIC GRATING SCALE

磁栅尺

◎ MS磁栅系列 (MS MAGNETIC GRID SERIES)



■ 3M背胶粘贴安装

3M back adhesive mounting

■ 安装简易,使用可靠

Easy to install and reliable to use

■ 可定制磁极距和零点

Magnetic pole distance and zero point can be customized

■ 磁极距1mm,2mm,5mm

Magnetic pole distance 1mm,2mm,5mm

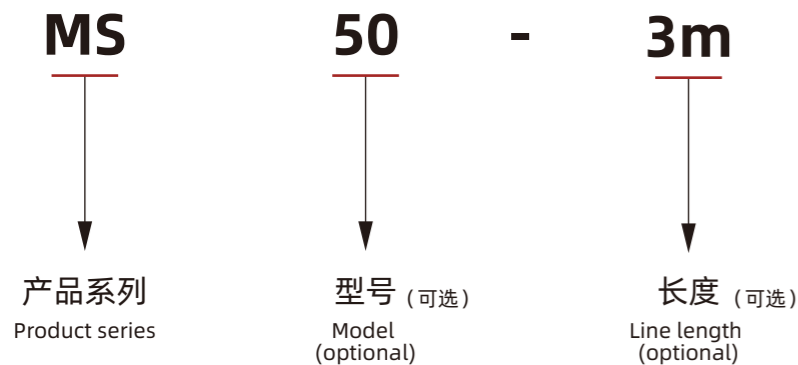
■ 可定制宽度5mm

Customizable width 5mm

■ 磁性稳定,使用寿命长

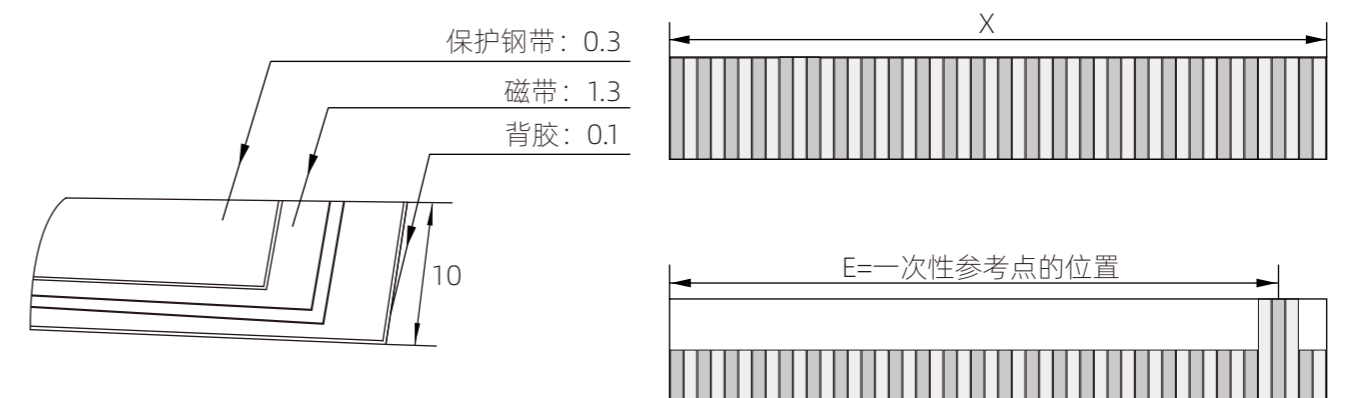
Magnetic stability, long service life

◎ 订货型号 (ORDER TYPE)



◎ 技术参数 (TECHNICAL PARAMETER)

型号参数 (Type parameter)	MS50	MS20	MS10
磁极距 (Magnetic pole distance)	5mm	2mm	1mm
材料 (Materials)	高性能磁条 (High performance magnetic strip)		
宽度 (breadth)	10mm ± 0.1mm		
厚度 (thickness)	1.3mm ± 0.1mm		
精度等级 (20°C) (Accuracy class (20°C))	Max.± 0.03mm	Max.±0.015mm	Max.±0.01mm
工作温度 (Operating temperature)	-5 ~ +75°C		
覆条 (Covering strip)	钢带+3M 双面胶 (Steel strip +3M double-sided tape)		
覆条宽度 (Cladding width)	10mm ± 0.1mm		
覆条厚度 (Cladding thickness)	0.35mm (含双面胶) (Double-sided tape included)		
单卷长度 (Single reel length)	标准卷 50m (Standard volume)		
防护等级 (Class of protection)	IP67		
可定制参数 (Customizable parameter)	磁极距、宽度 (Magnetic pole distance, width)		



GRATING SENSOR 光栅传感器

◎ PE系列 (PE SERIES)



■ 微型光栅尺，安装简易

Micro grating ruler, easy to install

■ 铝合金外壳，抗干扰强

Aluminum alloy shell, strong anti-interference

■ 适用于微小空间测量场合

Suitable for small space measurement applications

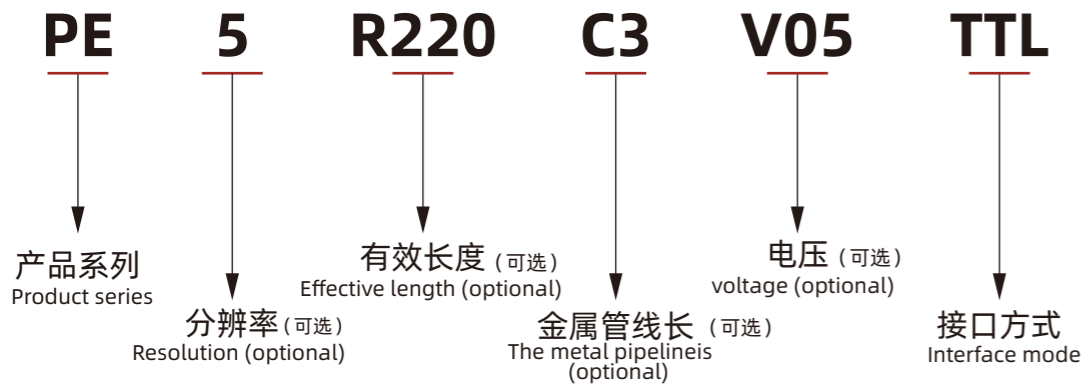
■ 有效行程范围30-360mm

Effective travel range 30~360mm

■ 可定制行程，分辨率

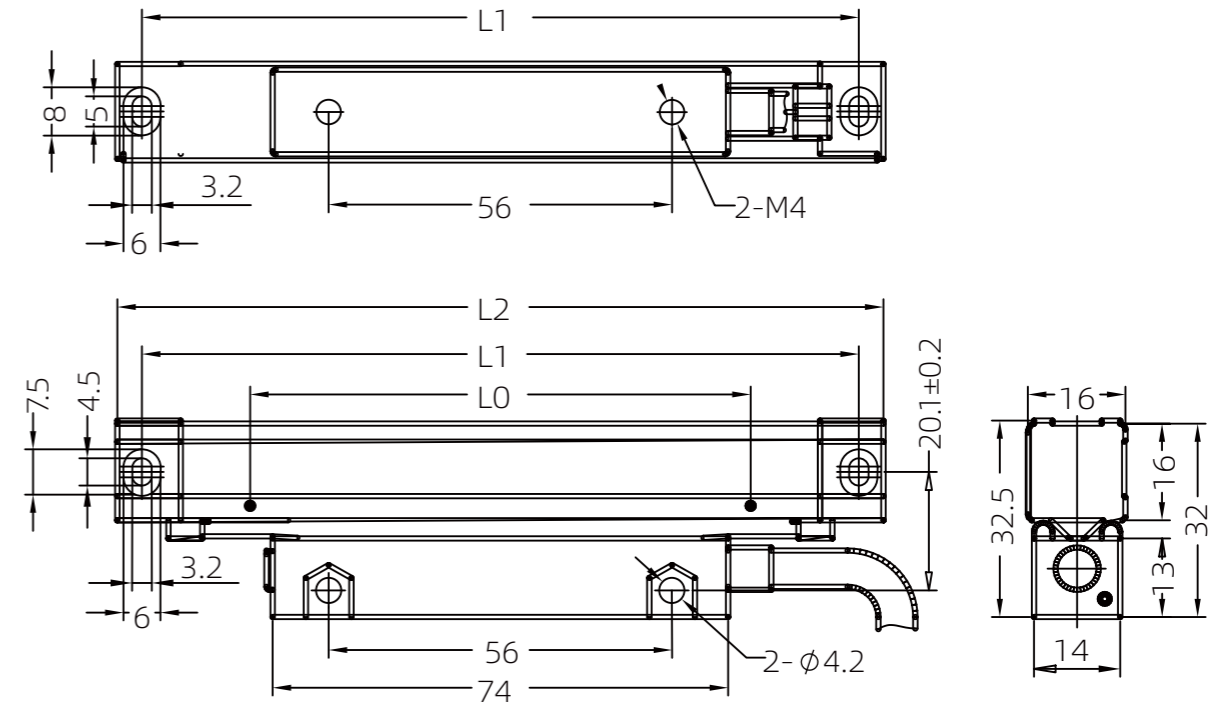
Customizable travel, resolution

◎ 订货型号 (ORDER TYPE)



◎ 技术参数 (TECHNICAL PARAMETER)

型号参数 (Type parameter)	PE
分辨率 (Resolution)	0.5μm、1μm、5μm
有效量程 (Effective range)	30-360mm
输出信号 (Output signal)	TTL/RS422
截面尺寸 (Section size)	14×13
重复精度 (repeatability)	Max. ± 1μm
移动速度 (Moving speed)	Max. 60m/min
工作电压 (Operating voltage)	5V
电缆长度 (Cable length)	3m
工作温度 (Operating temperature)	0°C ~ +45°C
防护等级 (Class of protection)	IP55
可定制 (customizable)	行程、分辨率 (Stroke, resolution)



位移角度测量/光栅



GRATING SENSOR 光栅传感器

◎ PF系列 (PF SERIES)



■ 小型光栅尺, 安装简易

Small grating ruler, easy to install

■ 适用于小空间测量场合

Suitable for small space measurement

■ 可定制行程, 分辨率

Customizable travel, resolution

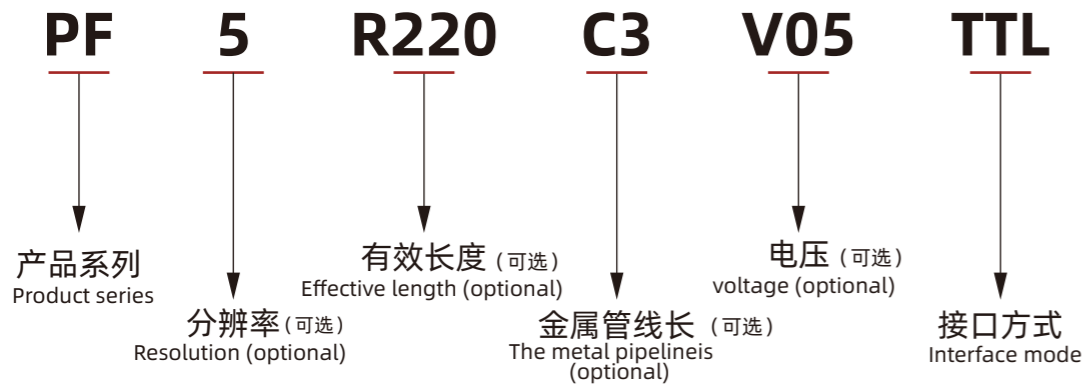
■ 铝合金外壳, 抗干扰强

Aluminum alloy shell, strong anti-interference

■ 有效行程范围70-470mm

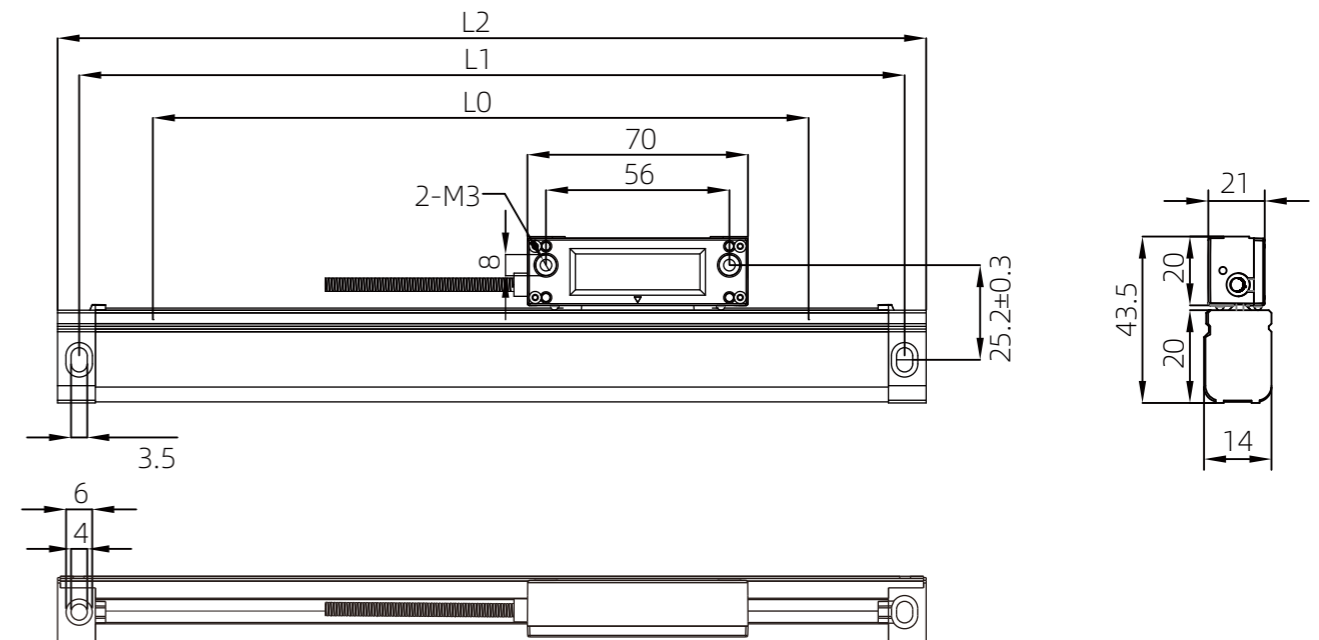
Effective travel range 70~470mm

◎ 订货型号 (ORDER TYPE)



◎ 技术参数 (TECHNICAL PARAMETER)

型号参数 (Type parameter)	PF
分辨率 (Resolution)	0.5μm、1μm、5μm
有效量程 (Effective range)	70-470mm
输出信号 (Output signal)	TTL/RS422
截面尺寸 (Section size)	14×20
重复精度 (repeatability)	Max. ± 1μm
移动速度 (Moving speed)	Max. 60m/min
工作电压 (Operating voltage)	5V
电缆长度 (Cable length)	3m
工作温度 (Operating temperature)	0°C ~ +45°C
防护等级 (Class of protection)	IP55
可定制 (customizable)	行程、分辨率 (Stroke, resolution)



位移角度测量/光栅



GRATING SENSOR 光栅传感器

◎ PS系列 (PS SERIES)



■ 有效行程范围70-1020mm

Effective travel range 70-1020mm

■ 外形设计美观，良好的刚性

Beautiful shape design, good rigidity

■ 可定制行程，分辨率

Customizable travel, resolution

■ 高精度，高分辨率

High precision, high resolution

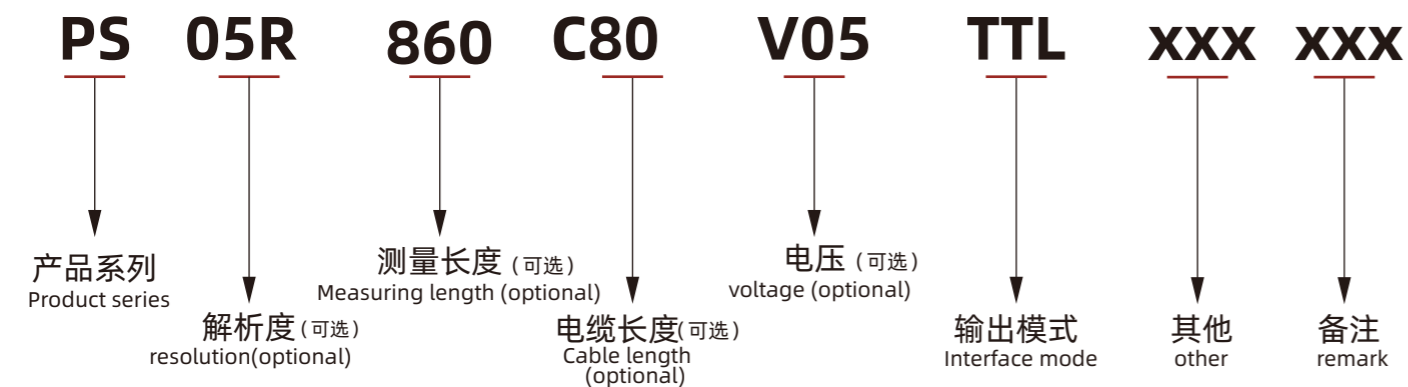
■ 铝合金外壳，抗干扰强

Aluminum alloy shell, strong anti-interference

■ 增量式光栅尺，分辨率高达0.5μm

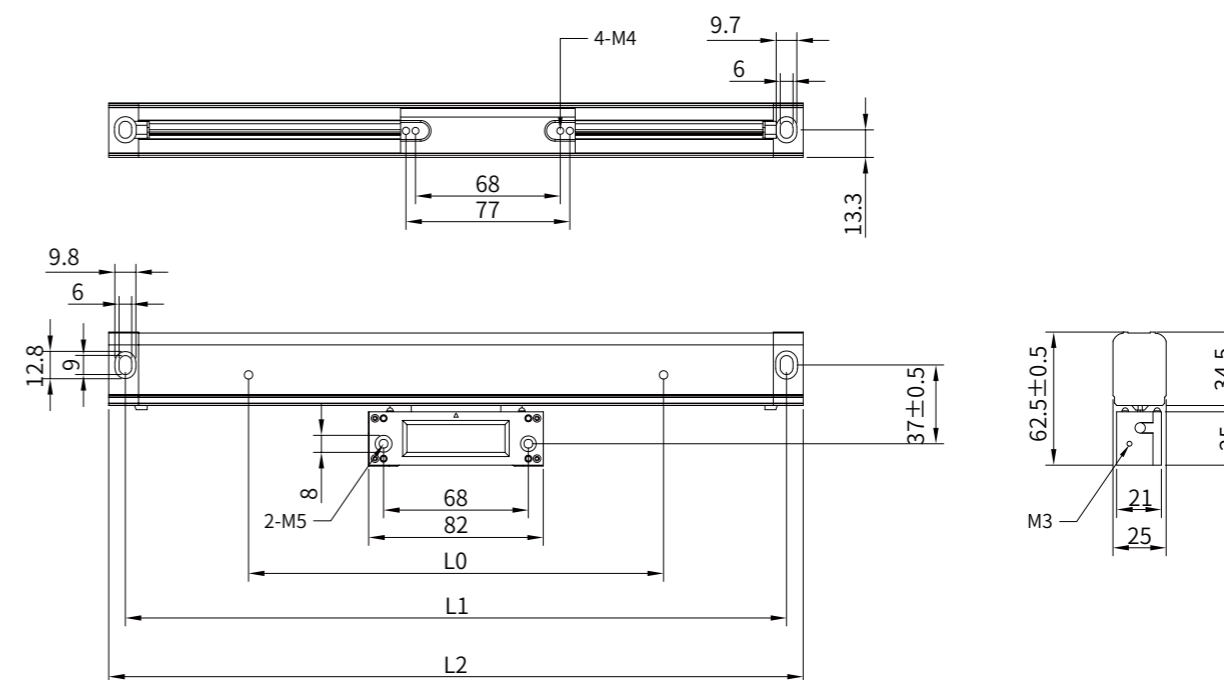
Incremental raster ruler with resolution up to 0.5μm

◎ 订货型号 (ORDER TYPE)



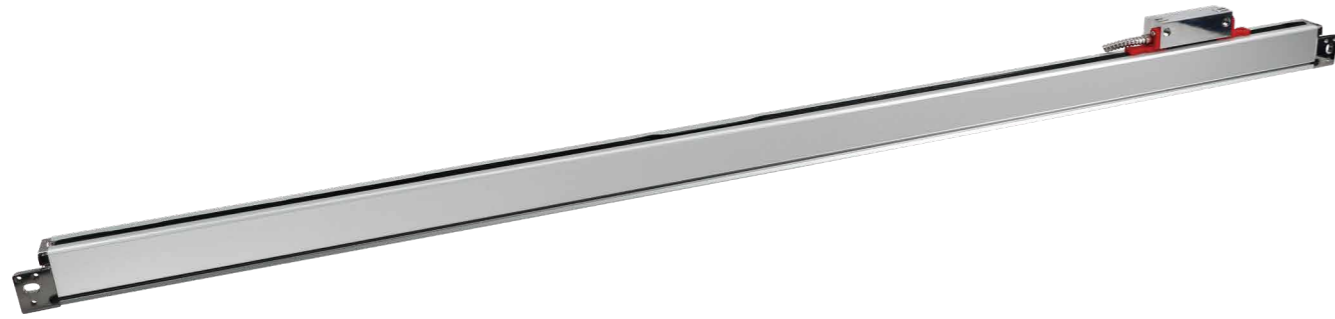
◎ 技术参数 (TECHNICAL PARAMETER)

型号参数 (Type parameter)	PS
解析度 (Resolution)	0.5μm/1μm/5μm
有效量程 (Effective range)	70-1020mm
光栅间距 (Grating spacing)	20μm
输出信号 (Output signal)	TTL/EIA422
热膨胀 (thermal expansion)	10.6 x 10 ⁶
重复性 (repeatability)	± 1增量 (± 1 increment)
加速度 (accelerated speed)	Max. 20m/s ²
电流 (electricity)	Max.80mA
相移 (phase shift)	90±5°
湿度 (humidity)	100%不凝聚
工作温度 (Operating temperature)	0°C ~ 50°C
存储温度 (storage temperature)	-20°C~80°C
防护等级 (Class of protection)	IP54
可定制 (customizable)	行程、分辨率 (Stroke, resolution)



GRATING SENSOR 光栅传感器

◎ PL系列 (PL SERIES)



■ 专为大型机床而设计

Designed for large machine tools

■ 任意地方加装固定支承点

Install fixed support points wherever possible

■ 可定制行程，分辨率

Customizable travel, resolution

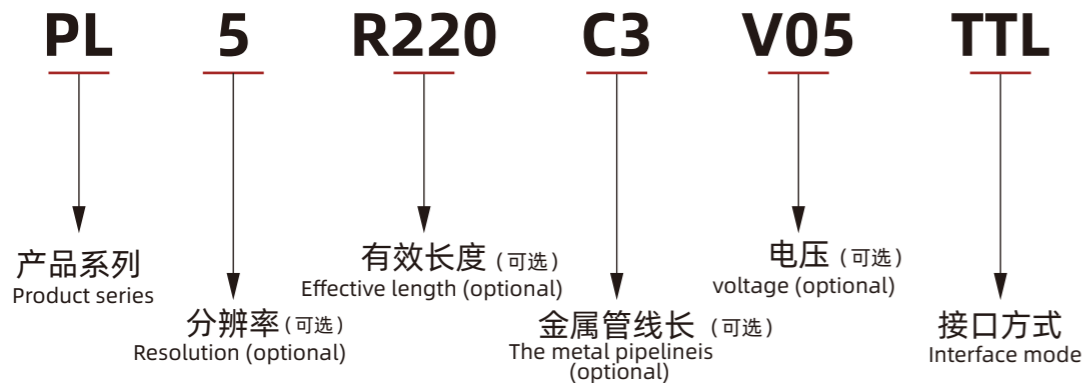
■ 高刚性，高稳定性

Large shape, high rigidity, high stability

■ 有效行程范围1000~3000mm

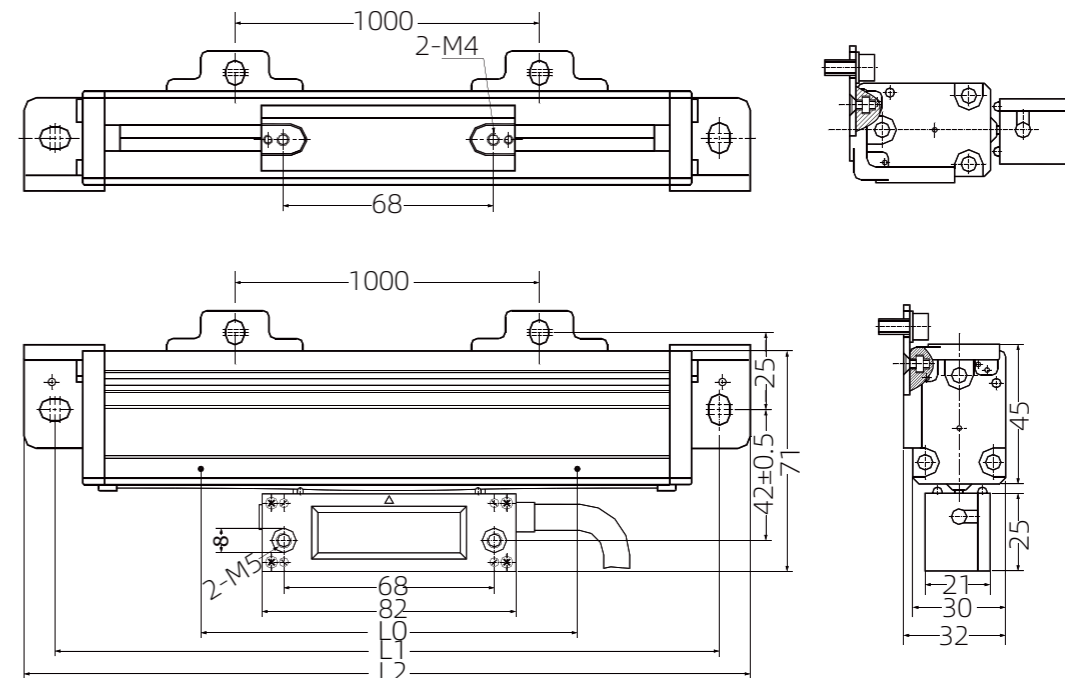
Effective travel range 1000~3000mm

◎ 订货型号 (ORDER TYPE)



◎ 技术参数 (TECHNICAL PARAMETER)

型号参数 (Type parameter)	PL
分辨率 (Resolution)	1μm、5μm
有效量程 (Effective range)	1000-3000mm
输出信号 (Output signal)	TTL/RS422
截面尺寸 (Section size)	32×45
重复精度 (repeatability)	Max. ± 1μm
移动速度 (Moving speed)	Max. 60m/min
工作电压 (Operating voltage)	5V/24V
电缆长度 (Cable length)	3m
工作温度 (Operating temperature)	0°C ~ +45°C
防护等级 (Class of protection)	IP55
可定制 (customizable)	行程、分辨率 (Stroke, resolution)



ABSOLUTE DISPLACEMENT SCALE
绝对位移尺

◎ LN



■ 可编程测量范围和切换范围

Programmable measuring range and switching range

■ 低磨损、免维护、防尘及抗干扰

Low wear, maintenance free, dust and anti-interference

■ 通过RS485实现参数化

It is parameterized by RS485

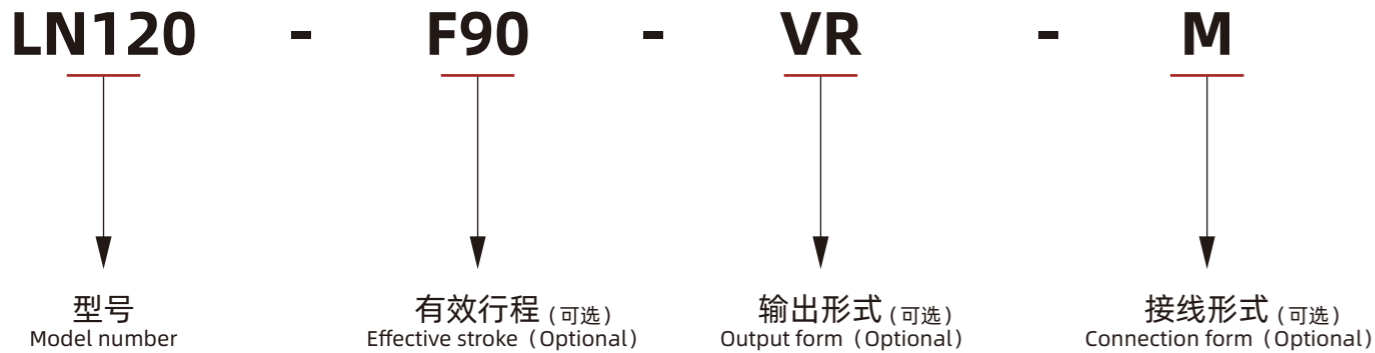
■ 防护等级IP67

Protection level IP67

■ 适用于张力纠偏、工业自动化等应用

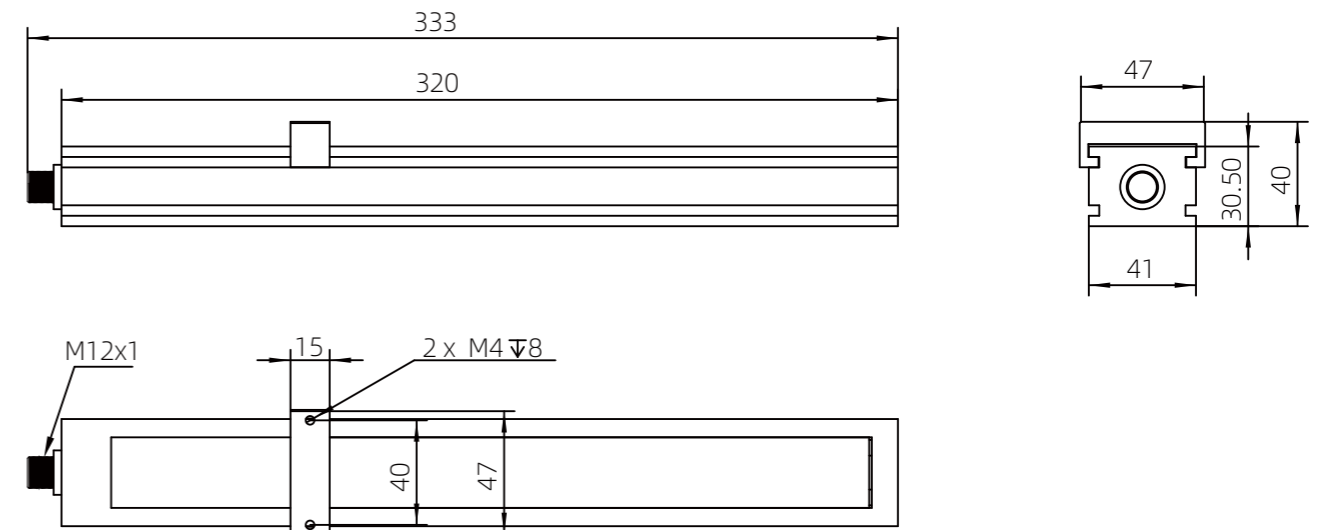
Suitable for tension correction, industrial automation and other applications

◎ 订货型号 (ORDER TYPE)



◎ 技术参数 (TECHNICAL PARAMETER)

型号参数 (Type parameter)	LN
检测距离 (Detection distance)	Max. 3mm
测量范围 (Measuring range)	0-220 mm
工作电压 (Operating voltage)	18 - 30 V
线性误差 (Linear error)	线性范围内:±0.2 mm (linear range :± 0.4mm)
重复精度 (repeatability)	Max. ±0.05mm
空载电流 (No-load current)	≤ 40 mA
输出形式 (Output form)	通讯输出:RS485,电压输出:0-10 V (Communication output :RS485, voltage output :0-10 V)
环境温度 (Ambient temperature)	-25 ~ +70°C (248 ... 343 k)
接线形式 (Connection form)	M12 连接器 (coupler)
防护等级 (Class of protection)	IP67



位移尺测量/其它



LINEAR MOTOR
直线电机

◎ Q60



■ 微型结构、适配紧凑空间

Micro structure for compact space

■ 兼容内嵌式丝杆型模组安装孔位

Compatible with built-in screw module mounting holes

■ 可定制防尘设计

Dustproof design can be customized

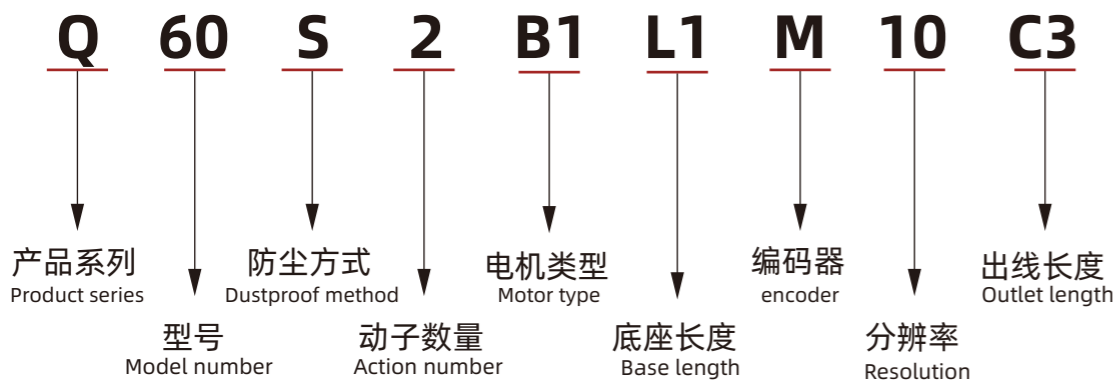
■ 一体式研磨、提高整体精度

Integrated grinding improves overall accuracy

■ 注油结构、免拆装保养

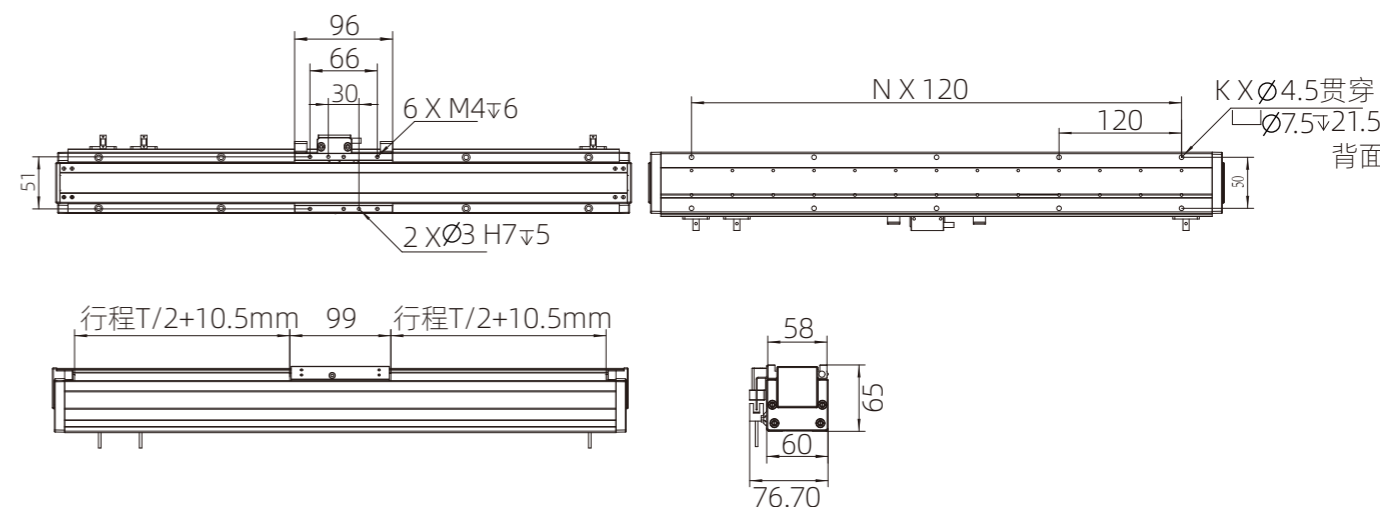
Oil injection structure, no disassembly and maintenance

◎ 订货型号 (ORDER TYPE)



◎ 技术参数 (TECHNICAL PARAMETER)

型号参数 (Type parameter)	Q60
电机推力 (Peak thrust)	持续推力:44.8 N,最大推力:179 N (Sustained thrust :44.8 N, maximum thrust :179 N)
电流 (Sustained thrust)	持续电流:2.5 A,最大电流:10 A (Continuous current: 2.5A, maximum current: 10A)
导轨 (Force constant)	内嵌式双导轨 (Built-in double guide rail)
使用条件 (Interphase resistance)	水平:负载≤6kg,侧挂:负载≤3kg;速度≤1m/s,偏载距离≤200mm (Horizontal:load ≤6kg,side hanging:load ≤3kg;Speed ≤1m/s,off-load distance ≤200mm)
反馈 (Interphase inductance)	0.5μm,1μm光栅可选/0.1μm,1μm,5μm 磁栅可选/定子反馈 (0.5μm,1μm grating /0.1μm,1μm,5μm magnetic gate/stator feedback options)
精度 (Peak current)	磁栅重复定位精度:± 2μm, 光栅绝对定位精度:± 3μm (Magnetic gate repeated positioning accuracy :± 2μm, grating absolute positioning accuracy :± 3μm)
直线度 (straightness)	± 10μm/300mm
模组重量 (Magnetic pitch)	60mm行程2kg (每增加60mm行程增加0.32kg) (60mm stroke 2kg (0.32kg for each additional 60mm stroke))
盖板型材长度 (Maximum stroke)	≥1.2M为钢带盖板 (≥1.2M indicates a steel strip cover)



LINEAR MOTOR
直线电机

◎ Q82



■ **高刚性、高负载大推力**
High rigidity, high load and large thrust

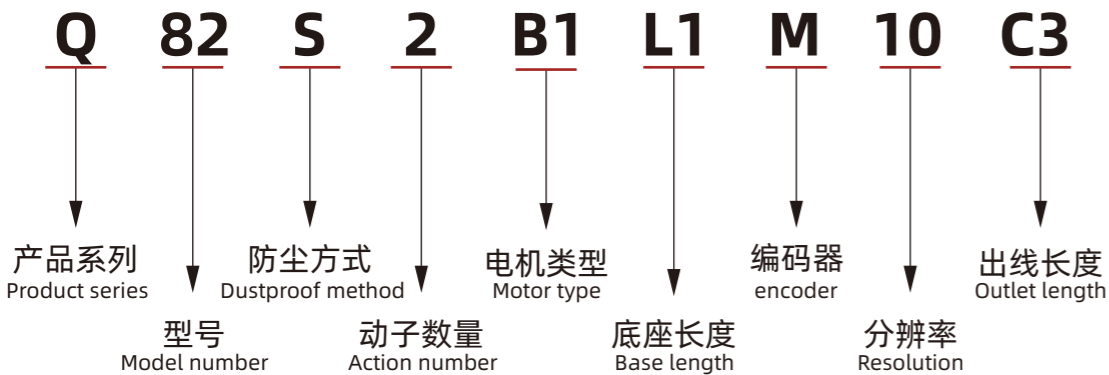
■ **兼容内嵌式丝杆型模组安装孔位**
Compatible with built-in screw module mounting holes

■ **可定制防尘设计**
Dustproof design can be customized

■ **一体式研磨、提高整体精度**
Integrated grinding improves overall accuracy

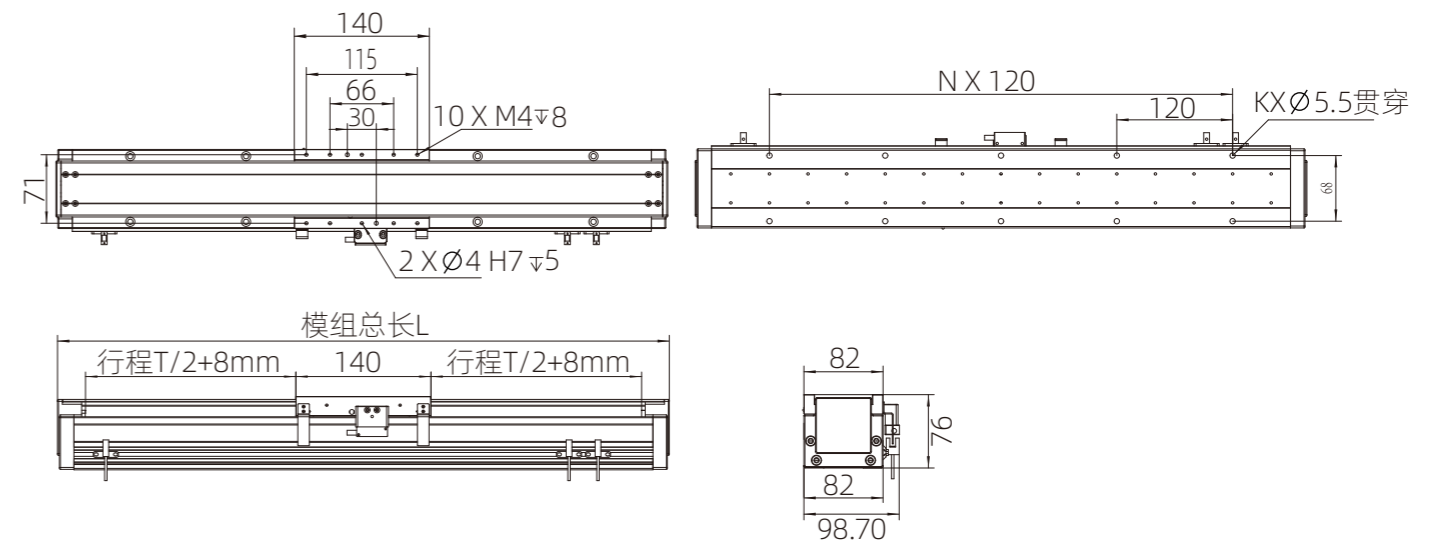
■ **注油结构、免拆装保养**
Oil injection structure, no disassembly and maintenance

◎ **订货型号** (ORDER TYPE)



◎ **技术参数** (TECHNICAL PARAMETER)

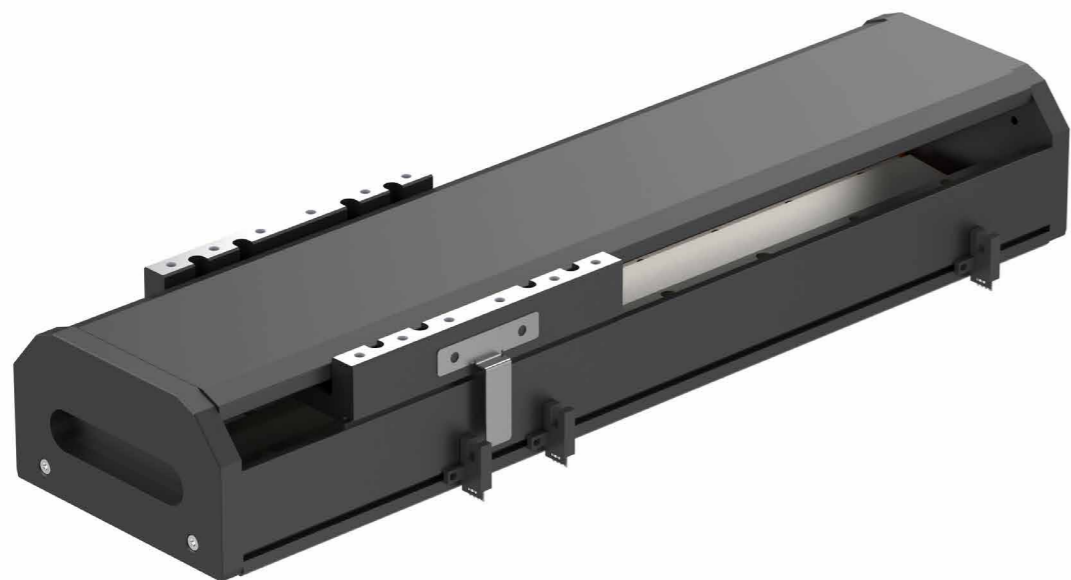
型号参数 (Type parameter)	B1	B2
电机推力 (Peak thrust)	持续推力:52N,最大推力:208 N (Sustained thrust :52 N, maximum thrust :208 N)	持续推力:98N,最大推力:392 N (Sustained thrust :98 N, maximum thrust :392 N)
电流 (Sustained thrust)	持续电流:2.5 A,最大电流:10A (Continuous current::2.5A, maximum current::10A)	
导轨 (Force constant)	内嵌式双导轨 (Built-in double guide rail)	
使用条件 (Interphase resistance)	水平:负载≤10kg,侧挂:负载≤6kg 速度≤2m/s,偏载距离≤200mm (Horizontal:load ≤10kg,side hanging:load ≤6kg;Speed ≤2m/s,off-load distance ≤200mm)	水平:负载≤15kg,侧挂:负载≤10kg 速度≤2m/s,偏载距离≤200mm (Horizontal:load ≤15kg,side hanging:load ≤10kg;Speed ≤2m/s,off-load distance ≤200mm)
反馈 (Interphase inductance)	0.5μm,1μm光栅可选/0.1μm,1μm,5μm 磁栅可选/定子反馈 (0.5μm,1μm grating /0.1μm,1μm,5μm magnetic gate/stator feedback options)	
精度 (Peak current)	磁栅重复定位精度:± 2μm, 光栅绝对定位精度:± 3μm (Magnetic gate repeated positioning accuracy :± 2μm, grating absolute positioning accuracy :± 3μm)	
直线度 (straightness)	± 10μm/300mm	
模组重量 (Magnetic pitch)	60mm行程5kg (每增加60mm行程增加0.5kg) (60mm stroke 5kg (0.32kg for each additional 60mm stroke))	60mm行程5.6kg (每增加60mm行程增加0.5kg) (60mm stroke 5.6kg (0.32kg for each additional 60mm stroke))
盖板型材长度 (Maximum stroke)	≥1.2M为钢带盖板 (≥1.2M indicates a steel strip cover)	



LINEAR MOTOR

直线电机

◎ LA140



■ 低损耗、长寿命、低噪音

Low loss, long life, low noise

■ 高刚性、高负载大推力

High rigidity, high load and large thrust

■ 高频启动、高加速度高运行速度

High frequency start, high acceleration and high operating speed

■ 高精度、长行程

High precision, long travel

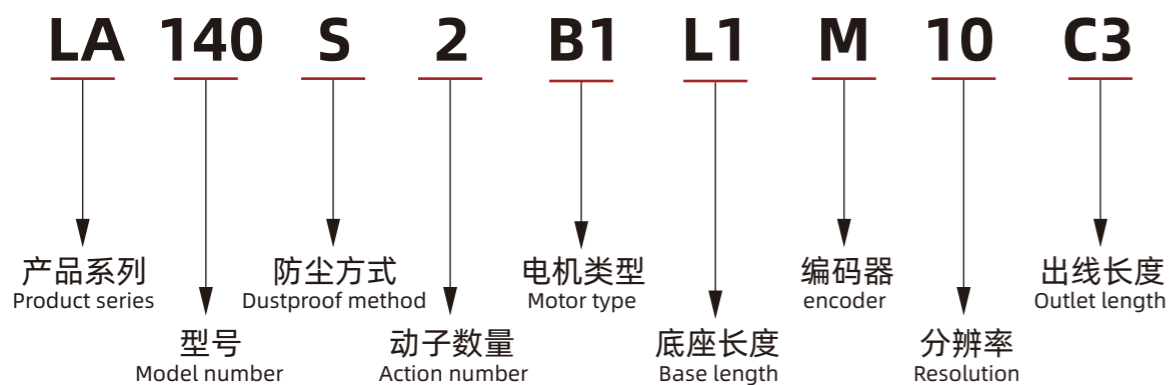
■ 编码器选择多样性

Encoder selection diversity

■ 零回程间隙和柔度，高传递效率

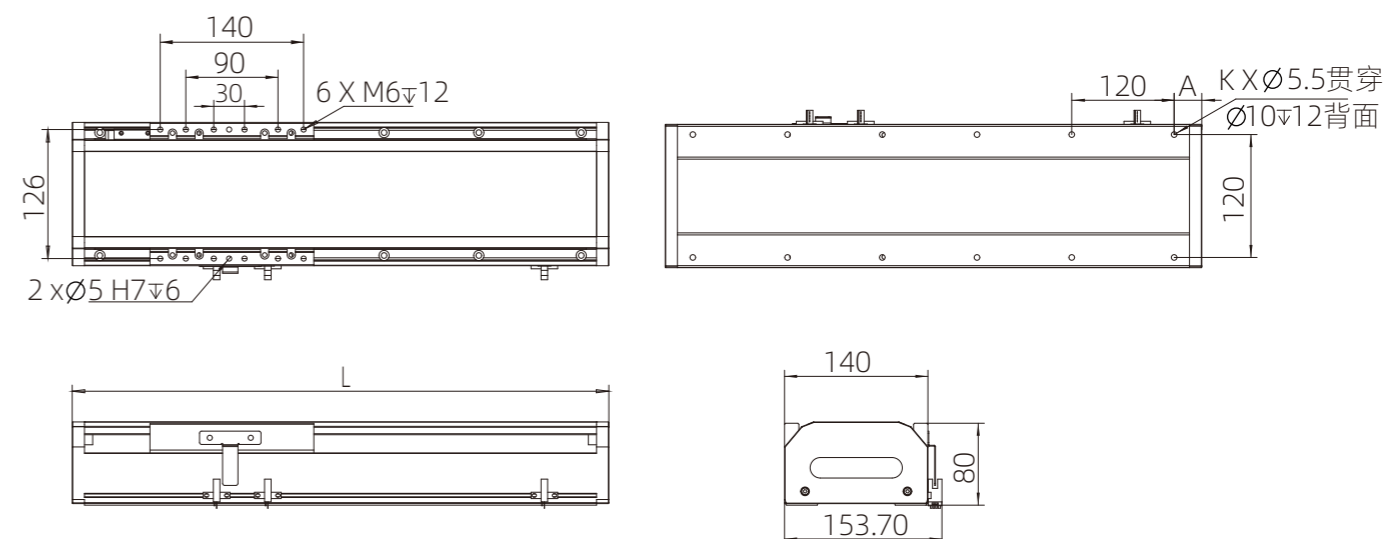
Zero return clearance and flexibility, high transfer efficiency

◎ 订货型号 (ORDER TYPE)



◎ 技术参数 (TECHNICAL PARAMETER)

型号参数 (Type parameter)	LA140
电机推力 (Peak thrust)	持续推力:130 N,最大推力:270 N (Sustained thrust :130 N, maximum thrust :270 N)
电流 (Sustained thrust)	持续电流:6.9 A,最大电流:9.4 A (Continuous current: 6.9A, maximum current: 9.4A)
导轨 (Force constant)	外置双导轨 (External dual guide rails)
使用条件 (Interphase resistance)	水平:负载≤30kg,侧挂:负载≤20kg;速度≤3m/s,偏载距离≤300mm (Horizontal:load ≤30kg,side hanging:load ≤20kg;Speed ≤3m/s,off-load distance ≤300mm)
反馈 (Interphase inductance)	0.5μm,1μm光栅可选/0.1μm,1μm,5μm 磁栅可选/定子反馈 (0.5μm,1μm grating /0.1μm,1μm,5μm magnetic gate/stator feedback options)
精度 (Peak current)	磁栅重复定位精度:± 2μm, 光栅绝对定位精度:± 3μm (Magnetic gate repeated positioning accuracy :± 2μm, grating absolute positioning accuracy :± 3μm)
直线度 (straightness)	± 15μm/1000mm
模组重量 (Magnetic pitch)	150mm行程6.7kg (每增加90mm行程增加0.7kg) (150mm stroke 6.7kg (0.7kg for each additional 90mm stroke))
盖板型材长度 (Maximum stroke)	≥1.5M为钣金盖板 (A sheet metal cover plate is ≥1.5M)



WEIGHING SENSOR
称重传感器

◎ 三滑轮张力CST (THREE PULLEY TENSION CST)



■ 高精度，低温漂

High precision, low temperature bleaching

■ 安装简易，使用寿命长

Easy to install, long service life

■ 适用于纱线、线缆、化纤纺织等行业

Suitable for yarn, cable, chemical fiber textile and other industries

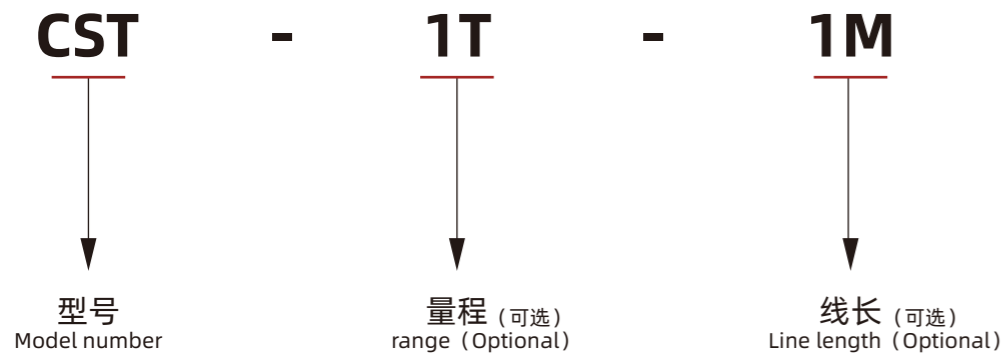
■ 结构紧凑，密封可靠

Compact structure, reliable sealing

■ 防水等级IP66

Waterproof rating IP66

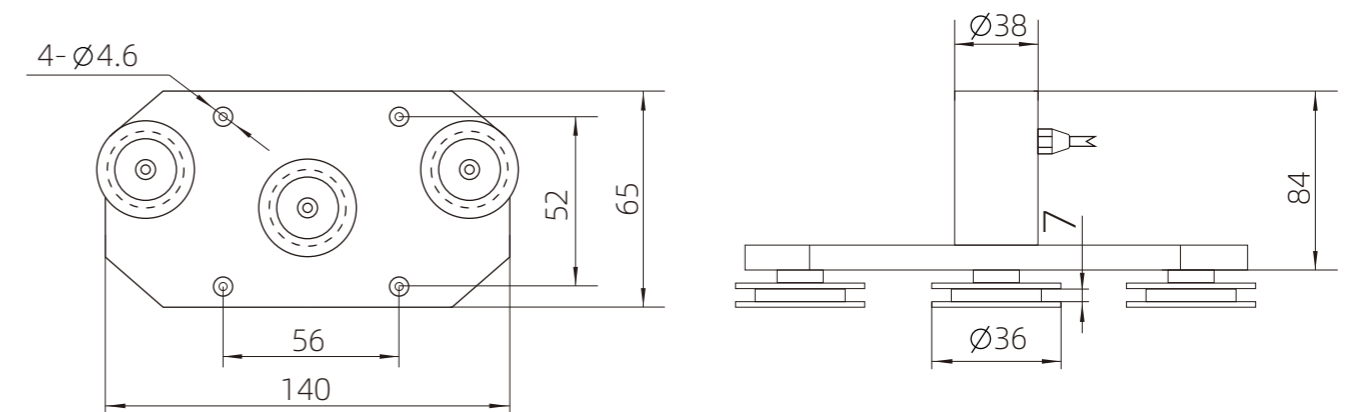
◎ 订货型号 (ORDER TYPE)



◎ 技术参数 (TECHNICAL PARAMETER)

型号参数 (Type parameter)	CST
额定量程 (Rated range)	10kg、20kg、50kg、100kg
额定激励电压 (Rated driving voltage)	5-12VDC
综合精度 (Comprehensive accuracy)	≤0.05%F·S
灵敏度 (sensitivity)	Max. 1.5±0.1mV/V
非线性误差 (Nonlinear error)	Max. ±0.03%F.S
滞后误差 (Lag error)	Max. ±0.03%F.S
零点温度影响 (Zero temperature effect)	Max. ±0.02%F.S/10°C
灵敏度温度影响 (Sensitivity temperature effect)	Max. ±0.02%F.S/10°C
工作温度范围 (Operating temperature range)	-20°C ~ +80°C
安全负载 (Safe load)	120%F.S
防护等级 (Class of protection)	IP66
材质 (material)	合金钢, 不锈钢(可选) (Alloy steel, stainless steel (optional))
电缆 (cable)	1m
可定制 (customizable)	线长可按需定制 (Line length can be customized)

★ 图示尺寸仅供参考，详情请查询使用手册



WEIGHING SENSOR

称重传感器

◎ 微型测力VST (MICRO FORCE MEASUREMENT VST)



■ 微型传感器，外形小巧

Micro sensor, small size

■ 可按客户要求定制

Can be customized according to customer requirements

■ 适用于各种小空间测力场合

Suitable for all kinds of small space force measurement occasions

■ 采用不锈钢材料

Made of stainless steel

■ 防水等级IP65

Waterproof rating IP65

◎ 订货型号 (ORDER TYPE)

VST

-

1KG

-

1M

型号

Model number

量程 (可选)

range (Optional)

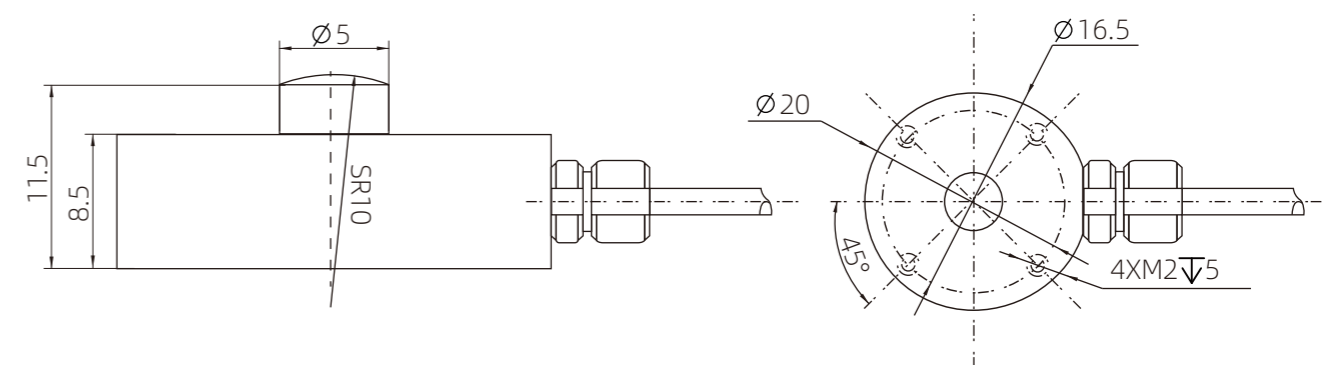
线长 (可选)

Line length (Optional)

◎ 技术参数 (TECHNICAL PARAMETER)

型号参数 (Type parameter)	VST
额定量程 (Rated range)	1kg、2kg、5kg、10kg
额定激励电压 (Rated driving voltage)	5-12VDC
重复精度 (repeatability)	0.5%F.S
灵敏度 (sensitivity)	Max. 1.5±0.5mV/V
非线性误差 (Nonlinear error)	Max. 0.5%F.S
滞后误差 (Lag error)	Max. 0.5%F.S
零点温度影响 (Zero temperature effect)	Max. ±0.2%F.S/10°C
灵敏度温度影响 (Sensitivity temperature effect)	Max. ±0.2%F.S/10°C
工作温度范围 (Operating temperature range)	-30°C ~ +80°C
安全负载 (Safe load)	150%F.S
防护等级 (Class of protection)	IP65
材质 (material)	不锈钢17-4PH, 铝合金 (可选) (Stainless steel 17-4PH, Aluminum alloy (optional))
电缆 (cable)	1m
可定制 (customizable)	线长可按需定制 (Line length can be customized)

★ 图示尺寸仅供参考，详情请查询使用手册



WEIGHING SENSOR 称重传感器

◎ H515



■ 两路继电器输出

Micro sensor, small size

■ 支持485通讯接口

ASupports 485 communication ports

■ 隔离的RS232与RS485两种通讯接口

Isolated RS232 and RS485 communication interfaces

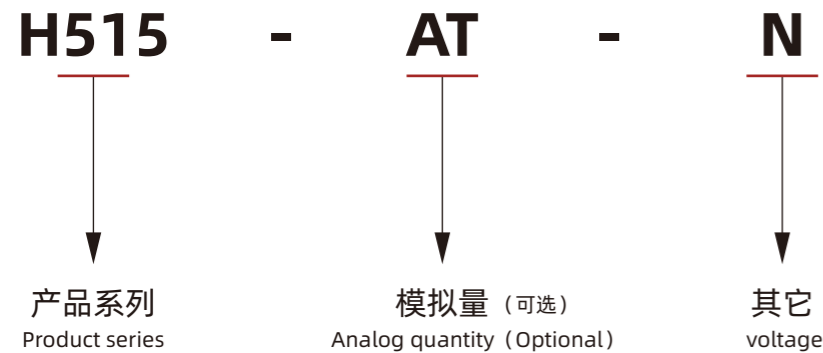
■ 高精度的24位专用A/D转换器

High precision 24-bit dedicated A/D converter

■ 三种标定方法，可适应多种场合

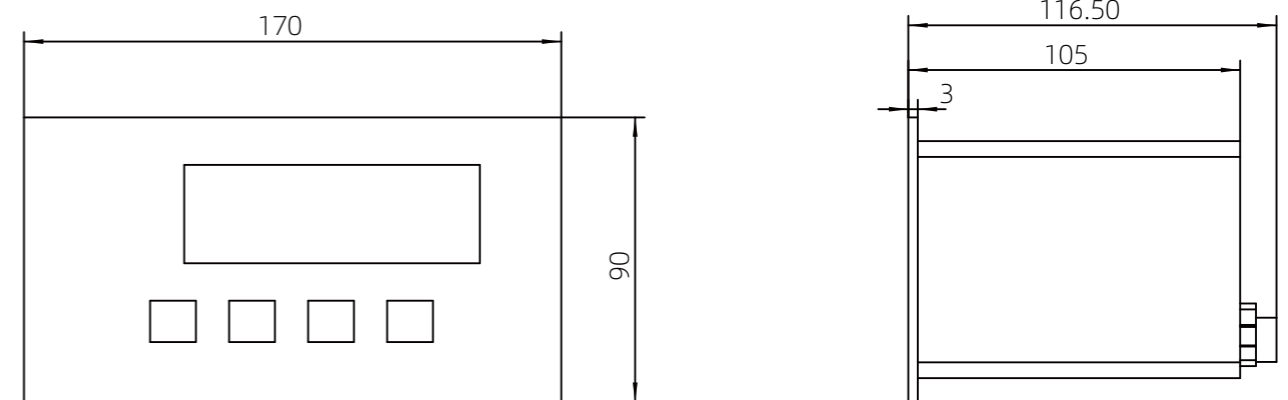
Three calibration methods can be adapted to a variety of occasions

◎ 订货型号 (ORDER TYPE)



◎ 技术参数 (TECHNICAL PARAMETER)

型号参数 (Type parameter)	H515
分度值 (Division value)	1、2、5、10、20、50
每检定分度值最小输入电压 (Minimum input voltage per test index value)	> 1.5uV/e
传感器激励电源 (Sensor excitation power supply)	DC 5V, 85mA
输入信号 (Input signal)	-20mV~20mV
显示方式 (Display mode)	7位LED数码管显示, 字高0.56寸20段光柱指示 (7-bit LED digital tube display, word height 0.56 inch 20-segment light column indication)
通讯串口 (Communication serial port)	RS-232或RS-485, 波特率;1200bps~19200bps (RS-232 or RS-485, baud rate; 1200bps~19200bps)
继电器模式 (Relay mode)	上下限;定值输出 (Upper and lower limits; Fixed value output)
模拟量输出 (Analog output)	电流:0mA~20mA (Current:0mA~20mA); 电压:4mA~20mA (Current:4mA~20mA); 电压:0V~5V (Voltage:0V~5V); 电压:0V~10V (Voltage:0V~10V),
外形尺寸 (Overall dimension)	87x172x105 mm
开孔尺寸 (Opening size)	76x 151 mm
电源 (Power source)	交流220V, 频率50/60Hz, 最大功率8W (Ac 220V, frequency 50/60Hz, maximum power consumption 8W)



WEIGHING SENSOR 称重传感器

◎ H313



■ 两路晶体器输出

Two way crystal output

■ 支持0~10V/4~20mA

support 0~10V/4~20mA

■ 隔离的RS232与RS485两种通讯接口

Isolated RS232 and RS485 communication interfaces

■ 高精度的24位专用A/D转换器

High precision 24-bit dedicated A/D converter

■ 三种标定方法，可适应多种场合

Three calibration methods can be adapted to a variety of occasions

■ 工业级称重过程控制器

Industrial grade weighing process controller

◎ 订货型号 (ORDER TYPE)

H313

产品系列
Product series

A

模拟量 (可选)
Analog quantity (Optional)

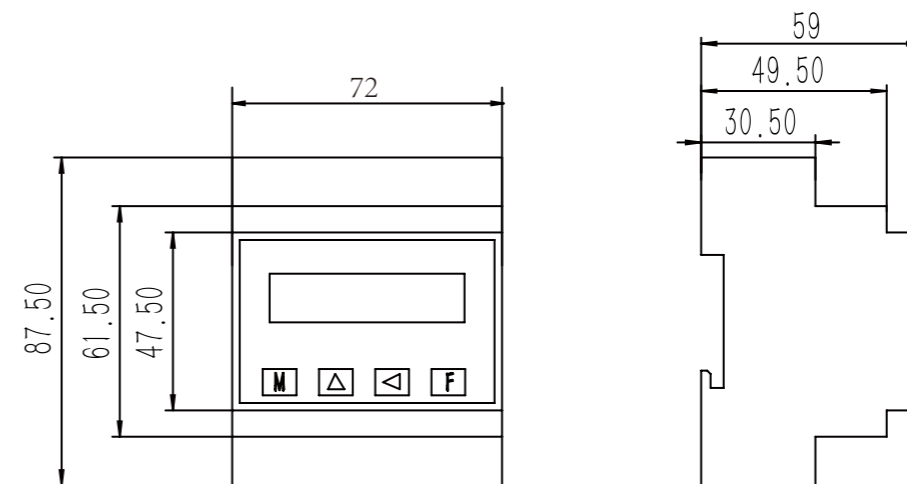
-

N

其它
voltage

◎ 技术参数 (TECHNICAL PARAMETER)

型号参数 (Type parameter)	H313
分度值 (Division value)	1、2、5、10、20、50
每检定分度值最小输入电压 (Minimum input voltage per test index value)	> 1.5uV/e
传感器激励电源 (Sensor excitation power supply)	DC 5V, 85mA
传感器输入信号 (Sensor input signal)	-20mV~20mV
显示方式 (Display mode)	7位LED数码管显示, 字高0.56寸20段光柱指示 (7-bit LED digital tube display, word height 0.56 inch 20-segment light column indication)
通讯串口 (Communication serial port)	RS-232或RS-485, 波特率;1200bps~19200bps (RS-232 or RS-485, baud rate; 1200bps~19200bps)
晶体管模式 (Transistor mode)	上下限;定值输出 (Upper and lower limits; Fixed value output)
模拟量输出 (Analog output)	电流:0mA~20mA (Current:0mA~20mA); 电流:4mA~20mA (Current:4mA~20mA); 电压:0V~5V (Voltage:0V~5V); 电压:0V~10V (Voltage:0V~10V),
外形尺寸 (Overall dimension)	87.5x72x59 mm
安装方式 (Installation mode)	轨道卡扣 (Track clasp)
电源 (Power source)	直流24V (Dc 24V)



ANGLE DIGITAL READOUT

倾角数显表

◎ M301



■ 绝对式角度测量
Absolute Angle measurement

■ 以水平为参考计算，无累计误差
Horizontal calculation as reference, no cumulative error

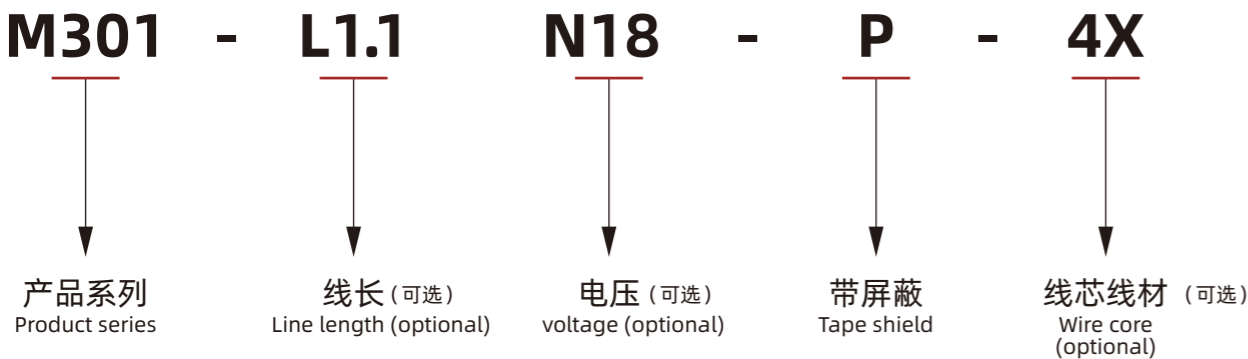
■ 高亮度&高对比数码管显示
High brightness & high contrast digital tube display

■ 断电后设备位移，测量数据不丢失
After the power is off, the measurement data is not lost

■ 无需机械转换装置，直接测量角位移面
Direct measurement without mechanical conversion device
Angular displacement plane

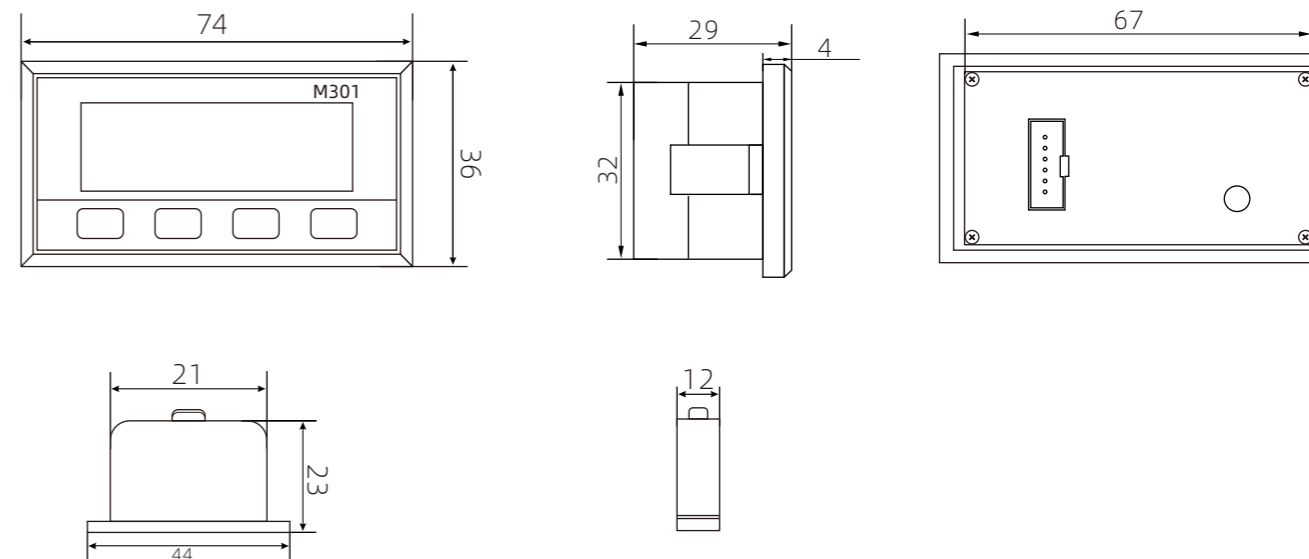
■ 可定制RS485通讯功能
RS485 communication function can be customized

◎ 订货型号 (ORDER TYPE)



◎ 技术参数 (TECHNICAL PARAMETER)

型号参数 (Type parameter)	M301
工作电压 (Operating voltage)	9-24 V DC/9-18 V AC
电流消耗 (Current consumption)	30 mA
分辨率 (Resolution)	0.1°、0.5°
显示范围 (Display range)	-180° ~ +180°
系统精度 (System accuracy)	Max. ± 0.2°
重复精度 (Repeatability)	Max.±0.1°
开口尺寸 (Opening size)	67×32mm
外壳结构 (Shell structure)	嵌入式套件 (Embedded kit)
工作温度 (Operating temperature)	-10°C~ +60°C
存储温度 (Storage temperature)	-20°C ~ +70 °C
防护等级 (Class of protection)	数显表 IP40, 传感器 IP67 (Digital display meter IP40, sensor IP67)
可定制 (customizable)	RS485通讯功能 (RS485 communication function)



倾角传感器



DIGITAL PRESSURE SENSOR

数字气压传感器

◎ XP系列 (XP SERIES)



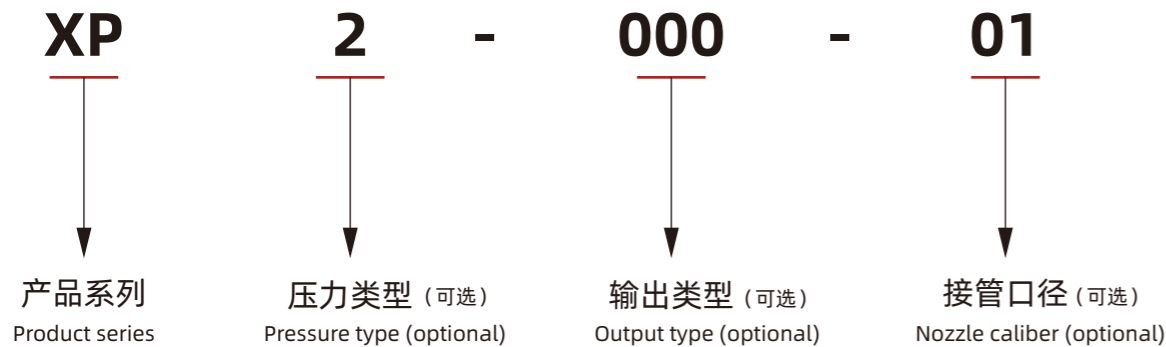
■ 外形小巧，安装方便
Compact and easy to install

■ 支持开关量和RS485通讯输出
Supports switching quantity and RS485 communication output

■ “当前值”和“基准值”同时显示，基准值可直接设定
Current Value is the same as Base Value Display, the reference value can be set directly

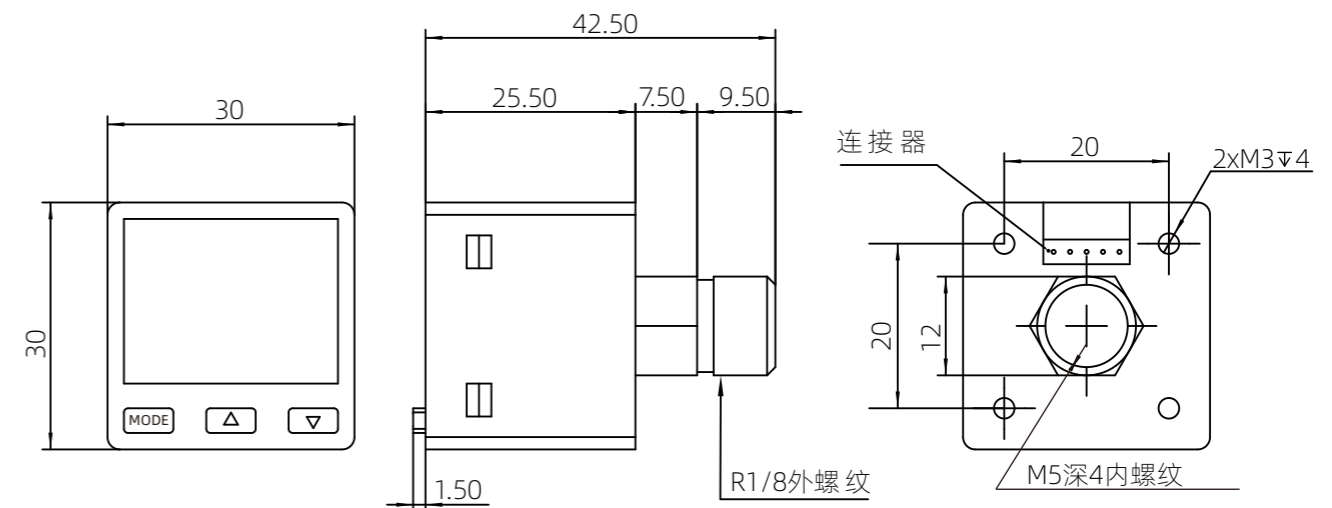
■ 双画面，3色显示（红、绿、橙）
Dual screen, 3-color display (red, green, orange)

◎ 订货型号 (ORDER TYPE)



◎ 技术参数 (TECHNICAL PARAMETER)

特性 (Characteristic)	正压/XP2 (Positive pressure)	复合压/XP5 (Combined pressure)
电源电压 (Supply voltage)	12~24V DC±10%	
电流消耗 (Current consumption)	24V 30mA Max 12V 60mA Max	
开关输出 (Switching output)	NPN O.C输出:80mA/24VDC PNP O.C输出:80mA/24VDC (exportation)	
模拟量输出 (Analog output)	电压: Max.5V 电流: Max.20mA (voltage) - (Electric current)	
额定压力范围 (Rated pressure range)	-0.1MPa~1.0MPa	-100kPa~100kPa
设定压力范围 (Set pressure range)	-0.1MPa~1.0MPa	-100kPa~100kPa
耐压 (Withstand voltage)	1.5MPa	500kPa
测量单位 (Unit of measurement)	MPa、KPa、kgf/cm ² 、psi、bar、inchHg	
显示范围 (Display range)	3位数值显示 (The 3-digit value is displayed)	
重复精度 (repeatability)	±0.2%F.S.	±0.5%F.S.
反应时间 (Reaction time)	通过按键操作选择2.5~5000ms (Select by key operation)	
工作温度 (Operating temperature)	0°C~ +50°C	
储存温度 (Storage temperature)	-10°C~ +60°C (不结露, 不结冰) (No condensation, no freezing)	
RH (相对湿度) (RH)	35~85%	
防护等级 (Class of protection)	IP40	



DIGITAL PRESSURE SENSOR

数字气压传感器

◎ DP系列 (DP SERIES)



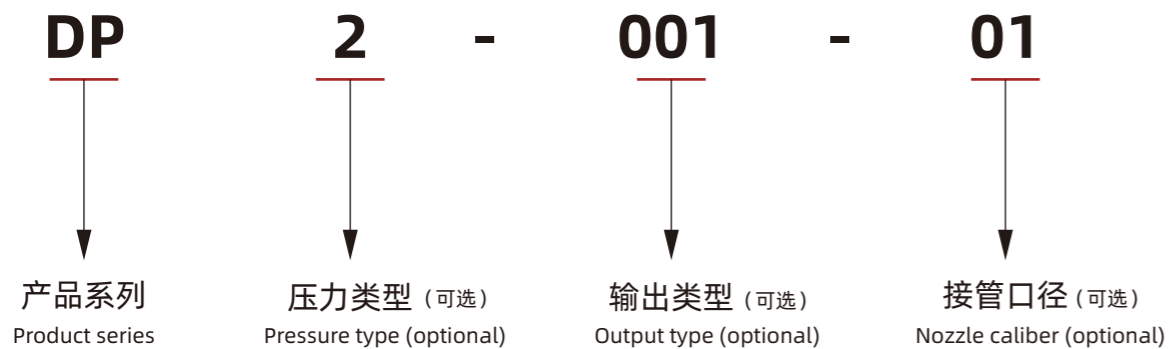
■ 外形小巧，安装方便
Compact and easy to install

■ 支持1路模拟量输出
Supports 1 analog output

■ “当前值”和“基准值”同时显示，基准值可直接设定
Current Value is the same as Base Value Display, the reference value can be set directly

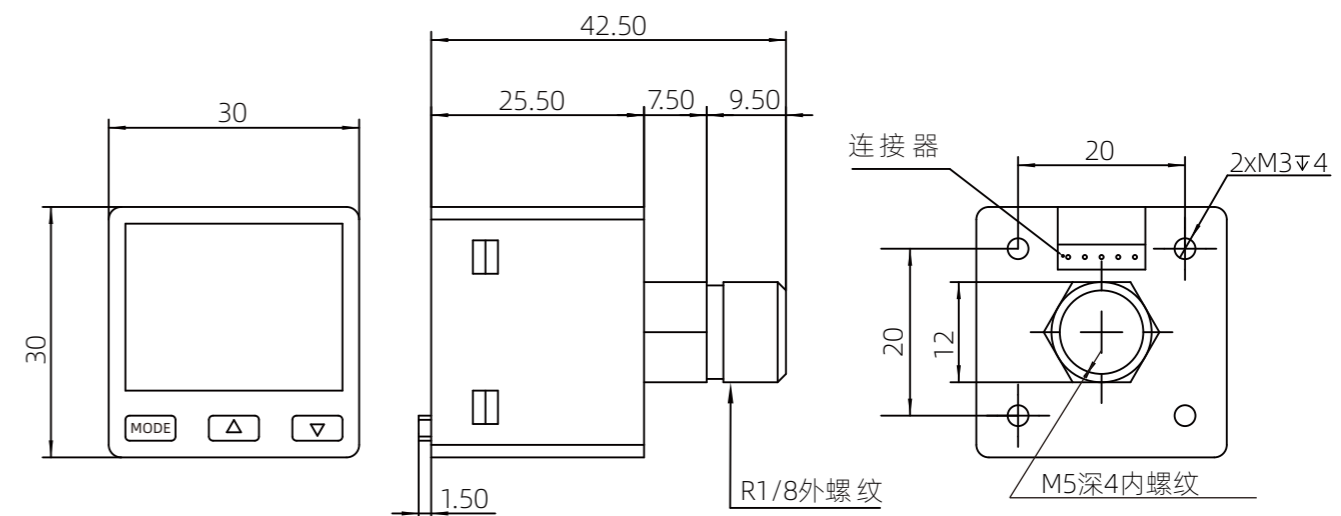
■ 双画面，3色显示（红、绿、橙）
Dual screen, 3-color display (red, green, orange)

◎ 订货型号 (ORDER TYPE)



◎ 技术参数 (TECHNICAL PARAMETER)

特性 (Characteristic)	正压/DP2 (Positive pressure)	复合压/DP5 (Combined pressure)
电源电压 (Supply voltage)	12~24V DC±10%	
电流消耗 (Current consumption)	24V 30mA Max 12V 60mA Max	
开关输出 (Switching output)	NPN O.C输出:80mA/24VDC PNP O.C输出:80mA/24VDC (exportation)	
模拟量输出 (Analog output)	电压: Max.5V 电流: Max.20mA (voltage) - (Electric current)	
额定压力范围 (Rated pressure range)	-0.1MPa~1.0MPa	-100kPa~100kPa
设定压力范围 (Set pressure range)	-0.1MPa~1.0MPa	-100kPa~100kPa
耐压 (Withstand voltage)	1.5MPa	500kPa
测量单位 (Unit of measurement)	MPa、KPa、kgf/cm ² 、psi、bar、inchHg	
显示范围 (Display range)	3位数值显示 (The 3-digit value is displayed)	
重复精度 (repeatability)	±0.2%F.S.	±0.5%F.S.
反应时间 (Reaction time)	通过按键操作选择2.5~5000ms (Select by key operation)	
工作温度 (Operating temperature)	0°C~ +50°C	
储存温度 (Storage temperature)	-10°C~ +60°C (不结露, 不结冰) (No condensation, no freezing)	
RH (相对湿度) (RH)	35~85%	
防护等级 (Class of protection)	IP40	



DIGITAL PRESSURE SENSOR

数字气压传感器

◎ AP系列 (AP SERIES)



■ 2路开关量 (NPN或PNP) 输出 ■ 支持1路模拟输出
2 switches (NPN or PNP) output Supports one analog output

■ IP65超强防水, 可满足恶劣环境下的产品运作 ■ 压力单位可转换:
psi、bar、kgf、kPa、MPa
IP65 super waterproof, can meet the harsh environment of product operation Pressure units are convertible: psi, bar, kgf, kPa, MPa

◎ 订货型号 (ORDER TYPE)

AP **2** - **010** - **01**

↓ ↓ ↓ ↓

产品系列 压力类型 (可选) 输出类型 (可选) 接管口径 (可选)
Product series Pressure type (optional) Output type (optional) Nozzle caliber (optional)

◎ 技术参数 (TECHNICAL PARAMETER)

特性 (Characteristic)	正压/AP2 (Positive pressure)	复合压/AP5 (Combined pressure)
电源电压 (Supply voltage)	12~24V DC±10%	
电流消耗 (Current consumption)	24V 30mA Max. 12V 60mA Max.	
开关输出 (Switching output)	NPN O.C输出:80mA/24VDC PNP O.C输出:80mA/24VDC (exportation)	
模拟量输出 (Analog output)	1.0~ 5.0VDC (或略小)	1.0~ 5.0VDC (或略小)
额定压力范围 (Rated pressure range)	-0.1MPa~1.0MPa	-100kPa~100kPa
设定压力范围 (Set pressure range)	-0.1MPa~1.0MPa	-100kPa~100kPa
耐压 (Withstand voltage)	1.5MPa	500kPa
测量单位 (Unit of measurement)	psi、bar、kgf、kPa、MPa	
显示范围 (Display range)	4位数值显示 (The 4-digit value is displayed)	
重复精度 (repeatability)	±0.5%F.S.	
反应时间 (Reaction time)	通过按键操作选择2.5~5000ms (Select by key operation)	
工作温度 (Operating temperature)	0°C~ +50°C	
储存温度 (Storage temperature)	-10°C~ +60°C (不凝结) (non-condensing)	
RH (相对湿度) (RH)	35~85%RH	
防护等级 (Class of protection)	IP65	

